

ISBN: 978-81-688266-0-1

# BIOMETRIC SYSTEMS

Technology, Design and Performance Evaluation

Editors

Prof. Hiranman Jadhav

Dr. Mayuri Rathi

Prof. Renuka Patil

Prof. Abhilasha Kore



Bhumi Publishing, India

First Edition: June 2026

**BIOMETRIC SYSTEMS: Technology, Design and Performance Evaluation**

(ISBN: 978-81-688266-0-1)

DOI: <https://doi.org/10.5281/zenodo.20808774>

**Editors**

**Prof. Hiranman Sheshrao Jadhav**

**Dr. Mayuri Chetan Rathi**

**Prof. Renuka S. Patil**

**Prof. Abhilasha Kore**



*Bhumi Publishing*

**June 2026**

Copyright © Editors

Title: Biometric Systems: Technology, Design and Performance Evaluation

Editors: Prof. Hiranman Sheshrao Jadhav, Dr. Mayuri Chetan Rathi,

Prof. Renuka S. Patil, Prof. Abhilasha Kore

First Edition: June 2026

ISBN: 978-81-688266-0-1



DOI: <https://doi.org/10.5281/zenodo.20808774>

All rights reserved. No part of this publication may be reproduced or transmitted, in any form or by any means, without permission. Any person who does any unauthorized act in relation to this publication may be liable to criminal prosecution and civil claims for damages.

***Published by Bhumi Publishing,***

***a publishing unit of Bhumi Gramin Vikas Sanstha***



**Nigave Khalasa, Tal – Karveer, Dist – Kolhapur, Maharashtra, INDIA 416 207**

**E-mail: [bhumipublishing@gmail.com](mailto:bhumipublishing@gmail.com)**



**Disclaimer:** The views expressed in the book are of the authors and not necessarily of the publisher and editors. Authors themselves are responsible for any kind of plagiarism found in their chapters and any related issues found with the book.

## **PREFACE**

The rapid advancement of Artificial Intelligence (AI) and Data Science has ushered in a new era of innovation, transforming the way industries operate and societies function. From healthcare and agriculture to finance, education, manufacturing, and environmental management, AI-driven technologies and data-centric approaches are reshaping decision-making processes, enhancing efficiency, and creating unprecedented opportunities for growth and development. In this context, the book *Future of AI and Data Science: Transforming Industries and Society* presents a comprehensive exploration of the emerging trends, challenges, and applications that define this dynamic field.

This volume brings together contributions from researchers, academicians, industry experts, and professionals who are actively engaged in advancing knowledge and innovation in AI and Data Science. The chapters cover a wide spectrum of topics, including machine learning, deep learning, big data analytics, intelligent automation, predictive modeling, natural language processing, computer vision, ethical AI, cybersecurity, smart systems, and industry-specific applications. The contributors provide valuable insights into both theoretical foundations and practical implementations, highlighting how these technologies are driving digital transformation across various sectors.

While AI and Data Science offer immense benefits, they also raise important questions related to privacy, security, transparency, accountability, and ethical governance. Recognizing these concerns, this book emphasizes the need for responsible innovation and sustainable technological development that serves humanity while respecting social values and ethical principles.

The objective of this book is to provide a platform for knowledge sharing, interdisciplinary collaboration, and critical discussion on the future direction of AI and Data Science. It is intended to serve as a valuable resource for students, researchers, educators, policymakers, and industry practitioners seeking to understand the evolving technological landscape and its societal implications.

We sincerely thank all authors, reviewers, and contributors for their dedication and scholarly efforts in making this publication possible. We hope that this book will inspire further research, innovation, and meaningful dialogue, contributing to the responsible advancement of AI and Data Science for the benefit of industries and society alike.

**- Editors**

## TABLE OF CONTENT

<b>Sr. No.</b>	<b>Book Chapter and Author(s)</b>	<b>Page No.</b>
1.	<b>TALENTPRINT AI: FINGERPRINT-BASED LEARNING AND PERSONALITY PROFILING SYSTEM</b> Mayuri Rathi and Abhilasha Kore	1 – 4
2.	<b>BIOLEARN AI: FINGERPRINT INTELLIGENCE FOR PERSONALITY AND LEARNING STYLE DETECTION</b> Tejshri Pate and Ashika Hirulkar	5 – 9
3.	<b>SMARTBIOMETRIC PROFILING: AI-DRIVEN FINGERPRINT ANALYSIS FOR TALENT MAPPING</b> Hiraman Jadhav and Renuka Patil	10 – 19
4.	<b>NEURO FINGERPRINT AI: PREDICTING PERSONALITY TRAITS THROUGH FINGERPRINT PATTERNS</b> R Sarala and Shruti Chavan	20 – 29
5.	<b>PRINTPERSONA: AI SYSTEM FOR LEARNING STYLE AND PERSONALITY PREDICTION USING FINGERPRINTS</b> Mayuri Rathi and Vivekanand B Shere	30 – 35
6.	<b>NEXTGEN TALENT AI: BIOMETRIC FINGERPRINT ANALYSIS FOR PERSONALITY INSIGHTS</b> Mayuri Rathi and Shweta Banait	36 – 42



## **TALENTPRINT AI: FINGERPRINT-BASED LEARNING AND PERSONALITY PROFILING SYSTEM**

**Mayuri Rathi and Abhilasha Kore**

Department of Information Technology,

D. Y. Patil College of Engineering (DYPCOE), Pune,

Corresponding author E-mail: [2014mmsoni@gmail.com](mailto:2014mmsoni@gmail.com), [askore@dypcoeakurdi.ac.in](mailto:askore@dypcoeakurdi.ac.in)

### **Abstract**

Personality assessment plays a significant role in education, recruitment, career guidance, psychology, and personal development. Conventional personality evaluation methods, including questionnaires, interviews, and psychological tests, primarily depend on self-reported information and human judgment, which may introduce bias, inconsistency, and inaccuracies. To address these limitations, this project proposes an Artificial Intelligence (AI)-based Fingerprint Personality Prediction System that utilizes biometric fingerprint patterns for automated personality analysis. Fingerprints are unique, permanent, and genetically influenced biological characteristics that remain unchanged throughout an individual's lifetime. Dermatoglyphics research suggests that fingerprint ridge patterns such as loops, whorls, arches, and minutiae features may have developmental associations with brain functions, learning abilities, and behavioral tendencies. Leveraging these characteristics, the proposed system applies image processing, machine learning, and deep learning techniques to analyze fingerprint images and predict personality traits.

The system performs fingerprint image acquisition, preprocessing, feature extraction, classification, and personality prediction. Image preprocessing techniques including grayscale conversion, noise reduction, enhancement, and segmentation are employed to improve fingerprint quality. Important fingerprint features such as ridge density, ridge flow, loops, whorls, arches, and minutiae points are extracted and analyzed. Machine Learning algorithms such as Support Vector Machine (SVM), Decision Tree, and Deep Learning models such as Convolutional Neural Networks (CNN) are utilized to classify fingerprint patterns and establish relationships with personality traits.

The proposed system aims to provide a scientific, non-invasive, automated, and user-friendly alternative to traditional personality assessment methods. It minimizes human intervention, improves processing efficiency, and offers potential applications in educational guidance, career counseling, recruitment support, and personal development.

Future enhancements include the integration of larger biometric datasets, advanced deep learning architectures, cloud-based deployment, and real-time fingerprint analysis for improved prediction accuracy and scalability.

**Keywords:** Artificial Intelligence (AI), Fingerprint Recognition, Personality Prediction, Dermatoglyphics, Machine Learning, Deep Learning, Convolutional Neural Network (CNN), Support Vector Machine (SVM), Biometric Analysis, Fingerprint Classification, Image Processing, Minutiae Extraction, Ridge Pattern Analysis, Behavioral Assessment, Personality Profiling.

### **Motivation**

This project is mainly motivated by the increasing importance of personality assessment in education, recruitment, career guidance, and personal development. Traditional personality analysis methods such as questionnaires, interviews, and psychological tests often depend on self-reported answers and human observation. These methods can sometimes produce inaccurate or biased results because individuals may provide misleading information, misunderstand questions, or respond according to emotions and social pressure. As a result, there is a growing need for a more objective, scientific, and automated method for personality prediction.

Fingerprint biometrics provide a unique and reliable solution because fingerprints are permanent, genetically influenced, and different for every individual. Dermatoglyphics studies suggest that fingerprint ridge patterns such as loops, whorls, arches, and minutiae structures may have developmental relationships with brain functions, learning styles, and behavioral characteristics. Since fingerprint patterns are formed before birth and remain unchanged throughout life, they can serve as a stable biological indicator for personality analysis. Recent advancements in Artificial Intelligence, Machine Learning, and Computer Vision technologies have created opportunities to automate fingerprint analysis and identify meaningful personality-related patterns from biometric data. Existing systems mainly focus on fingerprint recognition for security and authentication purposes, but very few systems explore fingerprint-based personality prediction using intelligent algorithms. Therefore, developing an AI-driven fingerprint personality profiling system can provide faster, scientific, and non-invasive personality assessment while reducing human error and manual interpretation.

### **Objectives**

This project aims to develop an AI-based fingerprint personality prediction system capable of analyzing fingerprint patterns and identifying personality traits through Machine

Learning and Deep Learning techniques. To achieve this objective, the project is designed with the following goals.

### **Fundamental Technical Goals**

- To capture and process fingerprint images using image preprocessing techniques such as grayscale conversion, noise reduction, image enhancement, and segmentation.
- To extract important fingerprint features including ridge density, ridge flow, loops, whorls, arches, and minutiae points for personality analysis.
- To implement Machine Learning and Deep Learning algorithms such as Support Vector Machine (SVM), Decision Tree, and Convolutional Neural Networks (CNN) for fingerprint classification and personality prediction.
- To establish relationships between fingerprint characteristics and personality traits using intelligent classification techniques.

### **Design and Performance Goals**

- To develop a user-friendly system interface for fingerprint image upload, processing, and result visualization.
- To design an automated fingerprint analysis system that performs personality prediction with minimal human intervention.
- To improve prediction accuracy and reduce manual errors through intelligent biometric analysis.
- To ensure fast processing and efficient performance during fingerprint feature extraction and classification.

### **Application Objectives**

- To provide a scientific and non-invasive alternative to traditional questionnaire-based personality assessment methods.
- To support educational guidance by identifying learning styles and behavioral characteristics of individuals.
- To assist in career counseling and recruitment processes through AI-based personality profiling.
- To help individuals understand their strengths, weaknesses, and personality characteristics for personal development.

### **Vision for Ongoing Research**

- To improve the system using advanced Deep Learning models and larger biometric datasets for higher prediction accuracy.

- To integrate cloud storage and real-time fingerprint analysis features in future versions of the system.
- To expand the system for multiple biometric-based behavioral analysis applications in healthcare, education, and psychology

## References

1. Maltoni, D., Maio, D., Jain, A. K., & Prabhakar, S. (2009). *Handbook of fingerprint recognition*. Springer.
2. Jain, A. K., Flynn, P., & Ross, A. A. (2008). *Handbook of biometrics*. Springer.
3. Gonzalez, R. C., & Woods, R. E. (2018). *Digital image processing*. Pearson Education.
4. Goodfellow, I., Bengio, Y., & Courville, A. (2016). *Deep learning*. MIT Press.
5. Bishop, C. M. (2006). *Pattern recognition and machine learning*. Springer.
6. Duda, R. O., Hart, P. E., & Stork, D. G. (2001). *Pattern classification*. Wiley.
7. Jain, A. K., Ross, A., & Prabhakar, S. (2004). An introduction to biometric recognition. *IEEE Transactions on Circuits and Systems for Video Technology*, 14(1), 4–20.
8. Maio, D., Maltoni, D., Cappelli, R., Wayman, J. L., & Jain, A. K. (2004). FVC2004: Third fingerprint verification competition. *Lecture Notes in Computer Science*. Springer.
9. LeCun, Y., Bengio, Y., & Hinton, G. (2015). Deep learning. *Nature*, 521(7553), 436–444.
10. Cortes, C., & Vapnik, V. (1995). Support-vector networks. *Machine Learning*, 20(3), 273–297.
11. Breiman, L. (2001). Random forests. *Machine Learning*, 45(1), 5–32.
12. Otsu, N. (1979). A threshold selection method from gray-level histograms. *IEEE Transactions on Systems, Man, and Cybernetics*, 9(1), 62–66.
13. Ross, A., Nandakumar, K., & Jain, A. K. (2006). *Handbook of multibiometrics*. Springer.
14. Ratha, N. K., Bolle, R. M., & Pandit, V. D. (2004). *Automatic fingerprint recognition systems*. Springer Science & Business Media.
15. Kumar, A., & Zhang, D. (2006). Personal recognition using hand shape and texture. *IEEE Transactions on Image Processing*, 15(8), 2454–2461.
16. Haykin, S. (2009). *Neural networks and learning machines*. Pearson Education.
17. Schmidhuber, J. (2015). Deep learning in neural networks: An overview. *Neural Networks*, 61, 85–117.
18. Russ, J. C. (2016). *The image processing handbook*. CRC Press.

## **BIOLEARN AI: FINGERPRINT INTELLIGENCE FOR PERSONALITY AND LEARNING STYLE DETECTION**

**Tejshri Pate and Ashika Hirulkar**

Department of Artificial Intelligence and Data Science,

D. Y. Patil College of Engineering (DYPCOE), Pune

Corresponding author E-mail: [tejashriaa.pate@gmail.com](mailto:tejashriaa.pate@gmail.com), [anhirulkar@dypcoeakurdi.ac.in](mailto:anhirulkar@dypcoeakurdi.ac.in)

### **Abstract**

Personality assessment is an important aspect of education, recruitment, career guidance, psychology, and personal development. Traditional personality assessment methods such as questionnaires, interviews, and psychological tests mainly rely on self-reported responses and human interpretation, which may lead to subjective bias and inaccurate results. To overcome these limitations, this project proposes an Artificial Intelligence (AI)-based Fingerprint Personality Prediction System that utilizes biometric fingerprint patterns for automated personality analysis.

Fingerprints are unique, permanent, and genetically influenced characteristics that remain unchanged throughout an individual's lifetime. Dermatoglyphics studies suggest that fingerprint patterns such as loops, whorls, arches, ridge density, and minutiae features may have developmental relationships with cognitive abilities and behavioral characteristics. The proposed system employs image processing, machine learning, and deep learning techniques to analyze fingerprint images and predict personality traits.

The system performs fingerprint image acquisition, preprocessing, feature extraction, classification, and personality prediction. Image preprocessing techniques including grayscale conversion, noise reduction, enhancement, and segmentation are applied to improve fingerprint quality. Important fingerprint features such as ridge density, ridge flow, loops, whorls, arches, and minutiae points are extracted and analyzed. Machine Learning algorithms such as Support Vector Machine (SVM), Decision Tree (DT), and Deep Learning models such as Convolutional Neural Networks (CNN) are utilized to classify fingerprint patterns and establish relationships with personality traits.

The proposed system aims to provide a scientific, non-invasive, automated, and user-friendly alternative to traditional personality assessment methods. It minimizes human intervention, improves prediction efficiency, and offers applications in educational guidance, career counseling, recruitment support, and personal development. Future

enhancements include larger biometric datasets, cloud integration, real-time fingerprint analysis, and advanced deep learning architectures to improve prediction accuracy and scalability.

**Keywords:** Artificial Intelligence (AI), Fingerprint Biometrics, Personality Prediction, Dermatoglyphics, Machine Learning, Deep Learning, Convolutional Neural Network (CNN), Support Vector Machine (SVM), Fingerprint Classification, Ridge Pattern Analysis, Minutiae Extraction, Behavioral Analysis, Image Processing, Biometric Profiling, Personality Assessment.

### **Introduction**

The study of fingerprint biometrics and personality analysis has gained significant attention in recent years due to advancements in Artificial Intelligence, Machine Learning, and Computer Vision technologies. Initially, fingerprint recognition systems were mainly developed for security, authentication, and forensic identification purposes because fingerprints are unique, permanent, and highly reliable biometric features. Traditional biometric systems primarily focused on identifying individuals based on ridge patterns, minutiae points, and fingerprint matching techniques. Although these systems provided accurate identification, they were limited only to authentication and verification applications.

Recent research in dermatoglyphics has explored the relationship between fingerprint patterns and human behavioral characteristics. Researchers have suggested that fingerprint structures such as loops, whorls, arches, ridge density, and ridge flow may have developmental connections with intelligence, learning ability, and personality traits because fingerprints are formed during fetal development along with brain growth. Several studies have attempted to use fingerprint features for personality assessment, career guidance, and learning style analysis through computational methods and psychological models.

Therefore, the proposed study focuses on developing an AI-based fingerprint learning and personality profiling system that performs automated fingerprint preprocessing, feature extraction, classification, and personality prediction using Machine Learning and Deep Learning techniques. The research aims to improve the reliability, efficiency, and scientific approach of personality assessment systems while reducing dependency on traditional questionnaire-based evaluation methods.

**Table 1: Comparison among different research paper**

<b>Sr. No.</b>	<b>Title</b>	<b>Key Findings</b>	<b>Limitations</b>	<b>References</b>
1	Detection of Children's Personality with Fingerprint Using K-Nearest Neighbor (KNN) and Decision Tree Methods	Biometrics technology enables identification and verification of individuals using unique biological characteristics such as fingerprints. The study explored fingerprint-based personality detection using KNN and Decision Tree methods.	<ul style="list-style-type: none"> <li>• Limited accuracy and generalization.</li> <li>• Small or biased dataset issues.</li> </ul>	Haniffah & Dirgantoro (2025)
2	Deep Learning Technique of Fingerprint Recognition	Biometric fingerprint recognition provides an effective and reliable method for user authentication. The study highlights the widespread adoption of biometric systems due to ease of use, security, and low operational costs.	<ul style="list-style-type: none"> <li>• High computational and data requirements.</li> <li>• Subjectivity in personality assessment.</li> </ul>	Aboalhsan & Alatawi (2025)
3	What's Personality Got to Do with It? A Case Study on the Impact of Personality on Requirements Engineering-related Activities	Requirements engineering involves collaborative and human-centric activities. The study demonstrated that personality traits influence team interactions and performance in requirements engineering tasks.	<ul style="list-style-type: none"> <li>• Limited sample size and scope.</li> <li>• Reliance on self-reported personality data.</li> </ul>	Hidellaarac hchi & Grundy (2024)
4	A Quantitative Assessment of the Impact of Homogeneity in Personality Traits on Software Quality and Team Productivity	The study examined how similarity in personality traits affects software quality and team productivity, emphasizing the growing importance of team composition in software development.	<ul style="list-style-type: none"> <li>• Oversimplification of team dynamics.</li> <li>• Context-dependent results.</li> </ul>	Malik & Qamar (2022)

## Problem Statement

Personality assessment plays an important role in fields such as education, recruitment, career guidance, psychology, and personal development. Traditional personality analysis methods mainly depend on questionnaires, interviews, and psychological tests, which rely heavily on self-reported information and human interpretation. These methods are often subjective, time-consuming, and may produce inaccurate or biased results because individuals can misunderstand questions, provide false responses, or be influenced by emotions and social pressure during assessment.

Fingerprint biometrics provide a more scientific and reliable alternative because fingerprints are unique, permanent, and genetically influenced. Dermatoglyphic studies suggest that fingerprint ridge patterns such as loops, whorls, arches, and minutiae structures may have relationships with intelligence, learning behavior, and personality traits. However, most existing fingerprint systems are designed only for authentication and identification purposes rather than behavioral or personality analysis. Current systems also suffer from limitations such as lower prediction accuracy, dependency on manual analysis, limited datasets, and lack of intelligent automation. The major challenge is that there is no widely accepted intelligent system capable of automatically analyzing fingerprint patterns and predicting personality traits accurately using Artificial Intelligence and Machine Learning techniques. Existing personality prediction approaches often fail to combine biometric analysis with advanced Deep Learning models for automated and reliable personality profiling.

Therefore, the central problem addressed in this project is the development of an AI-based fingerprint learning and personality profiling system that can:

- Capture and process fingerprint images accurately using image preprocessing techniques.
- Extract important fingerprint features such as ridge density, loops, whorls, arches, and minutiae points.
- Apply Machine Learning and Deep Learning algorithms for fingerprint classification and personality prediction.

## References

1. Maltoni, D., Maio, D., Jain, A. K., & Prabhakar, S. (2009). *Handbook of fingerprint recognition* (2nd ed.). Springer.
2. Jain, A. K., Flynn, P., & Ross, A. (2008). *Handbook of biometrics*. Springer.

3. Gonzalez, R. C., & Woods, R. E. (2018). *Digital image processing* (4th ed.). Pearson Education.
4. Goodfellow, I., Bengio, Y., & Courville, A. (2016). *Deep learning*. MIT Press.
5. Bishop, C. M. (2006). *Pattern recognition and machine learning*. Springer.
6. Duda, R. O., Hart, P. E., & Stork, D. G. (2001). *Pattern classification*. Wiley-Interscience.
7. Jain, A. K., Ross, A., & Prabhakar, S. (2004). An introduction to biometric recognition. *IEEE Transactions on Circuits and Systems for Video Technology*, 14(1), 4–20.
8. Maio, D., Maltoni, D., Cappelli, R., Wayman, J. L., & Jain, A. K. (2004). FVC2004: Third fingerprint verification competition. *Lecture Notes in Computer Science*, 3072, 1–7.
9. LeCun, Y., Bengio, Y., & Hinton, G. (2015). Deep learning. *Nature*, 521(7553), 436–444.
10. Cortes, C., & Vapnik, V. (1995). Support-vector networks. *Machine Learning*, 20(3), 273–297.
11. Breiman, L. (2001). Random forests. *Machine Learning*, 45(1), 5–32.
12. Otsu, N. (1979). A threshold selection method from gray-level histograms. *IEEE Transactions on Systems, Man, and Cybernetics*, 9(1), 62–66.
13. Ross, A., Nandakumar, K., & Jain, A. K. (2006). *Handbook of multibiometrics*. Springer.
14. Ratha, N. K., Bolle, R. M., & Pandit, V. D. (2004). *Automatic fingerprint recognition systems*. Springer.
15. Haykin, S. (2009). *Neural networks and learning machines* (3rd ed.). Pearson Education.

## **SMARTBIOMETRIC PROFILING: AI-DRIVEN FINGERPRINT ANALYSIS FOR TALENT MAPPING**

**Hiraman Jadhav\* and Renuka Patil**

Department of Information Technology,

D. Y. Patil College of Engineering (DYPCOE), Pune

\*Corresponding author E-mail: [hiraman.jadhav123@gmail.com](mailto:hiraman.jadhav123@gmail.com)

### **Abstract**

The rapid advancement of Artificial Intelligence (AI), Machine Learning (ML), and Computer Vision technologies has created new opportunities for biometric-based analysis systems. Fingerprints are unique, permanent, and genetically influenced biometric characteristics that remain unchanged throughout an individual's lifetime. Traditionally, fingerprint recognition systems have been widely used for authentication, security, and forensic identification. Recent studies in dermatoglyphics have explored the possibility of identifying behavioral characteristics and learning patterns through fingerprint structures such as loops, whorls, arches, ridge density, and minutiae features.

The proposed AI-Based Fingerprint Learning and Personality Profiling System aims to develop an automated platform capable of analyzing fingerprint images and predicting personality-related characteristics using Machine Learning and Deep Learning techniques. The system captures fingerprint images, performs preprocessing operations including grayscale conversion, noise reduction, image enhancement, and segmentation, and extracts significant fingerprint features for analysis. Classification algorithms such as Support Vector Machine (SVM), Decision Tree, and Convolutional Neural Networks (CNN) are utilized to identify patterns and generate personality profiling results.

The system provides a user-friendly interface for fingerprint acquisition, processing, and result visualization. By automating fingerprint analysis, the proposed solution seeks to reduce manual effort, improve processing efficiency, and offer a non-invasive approach for personality assessment. The system can potentially support applications in educational guidance, career counseling, recruitment assistance, and personal development. Future enhancements may include cloud-based deployment, larger biometric datasets, and advanced deep learning architectures for improved prediction performance and scalability.

**Keywords:** Artificial Intelligence, Machine Learning, Deep Learning, Fingerprint Biometrics, Personality Prediction, Dermatoglyphics, Convolutional Neural Network (CNN), Support Vector Machine (SVM), Fingerprint Classification, Ridge Pattern Analysis, Minutiae Extraction, Image Processing, Behavioral Analysis, Personality Profiling, Biometric Systems.

## **Introduction**

Dermatoglyphics, the scientific study of fingerprint and skin ridge patterns, has shown possible relationships between fingerprint structures and human behavioral characteristics such as intelligence, learning style, and personality traits. Fingerprint patterns are formed during fetal development and remain unchanged throughout an individual's lifetime, making them a reliable biometric feature for identification and analysis. Recent advancements in Artificial Intelligence, Machine Learning, and Computer Vision technologies have enabled researchers to explore fingerprint biometrics not only for authentication purposes but also for personality prediction and behavioral analysis.

Traditional personality assessment methods such as interviews, questionnaires, and psychological tests often depend on self-reported information and manual interpretation, which may produce subjective or inaccurate results. To overcome these limitations, the proposed system combines fingerprint biometrics with Machine Learning and Deep Learning algorithms to develop an intelligent and automated personality prediction platform.

The "-Print: AI Based Fingerprint Learning and Personality Profiling" system captures fingerprint images, performs preprocessing operations, extracts important fingerprint features, and predicts personality traits through intelligent classification algorithms. The system aims to provide a reliable, fast, scientific, and non-invasive method for personality assessment that can support educational guidance, career counseling, recruitment analysis, and personal development applications.

## **Functional Requirements**

The functional requirements describe the major operations and functionalities performed by the AI-based fingerprint personality prediction system. The system is designed to capture fingerprint images, process them using Machine Learning techniques, and generate personality prediction results through intelligent biometric analysis.

### **Feature 1 – Fingerprint Image Acquisition**

- The system will allow users to upload or capture fingerprint images through the application interface.

- The system will support different fingerprint image formats for processing and analysis.
- The captured fingerprint image will be stored temporarily for preprocessing and feature extraction operations.

### **Feature 2 – Image Preprocessing and Enhancement**

- The system will perform preprocessing operations such as grayscale conversion, noise removal, image enhancement, normalization, and segmentation.
- The preprocessing module will improve fingerprint image quality for accurate feature extraction and classification.
- The system will remove unwanted distortions and improve ridge visibility using image processing techniques.

### **Feature 3 – Fingerprint Feature Extraction**

- The system will extract important fingerprint features such as ridge density, ridge flow, loops, whorls, arches, and minutiae points.
- The extracted features will be converted into structured data suitable for Machine Learning analysis.

The feature extraction module will identify meaningful fingerprint characteristics required for personality prediction

### **Feature 4 – Personality Prediction and Classification**

- The system will apply Machine Learning and Deep Learning algorithms such as SVM, Decision Tree, and CNN for fingerprint classification.
- The system will predict personality traits based on extracted fingerprint features and trained datasets.
- The final prediction results will be displayed through a user-friendly interface along with personality analysis information.

### **External Interface Requirements**

The external interface requirements describe how the fingerprint personality prediction system interacts with users, hardware components, software modules, and communication interfaces. These interfaces ensure smooth interaction between the system and external resources required for fingerprint processing and personality prediction.

## **User Interface**

The system provides a simple and user-friendly graphical interface that allows users to interact with the application easily. The interface is designed for both technical and non-technical users.

### **User Interface Features**

- The system provides options for fingerprint image upload and capture.
- The interface displays preprocessing results and extracted fingerprint features.
- The system presents personality prediction results in a clear and understandable format.
- The application includes login, registration, and result visualization modules for better user interaction.

## **Hardware Interface**

The hardware interface requirements describe the physical devices and components used for system operation and fingerprint image processing. The alert system will operate even if the user is unconscious or unresponsive.

### **Hardware Interface Details**

- i. Fingerprint Scanner or Camera:** Used for capturing fingerprint images for analysis and prediction.
- ii. Processor:** Intel Core i5 or higher processor is required for efficient Machine Learning and Image processing operations.
- iii. RAM:** Minimum 8 GB RAM is required to support Deep Learning libraries and image processing tasks.
- iv. Storage:** Minimum 40 GB hard disk space is required for datasets, software libraries, and project files

## **Software Interfaces**

The software interface requirements describe the interaction between system software modules and development tools.

### **Software Interface Details**

- **Operating System:** Windows 10 or Linux operating system is supported.
- **Programming Language:** Python is used for Machine Learning, image processing, and application development.
- **Libraries and Frameworks:** The system uses OpenCV, TensorFlow, Keras, NumPy, Pandas, and Scikit-learn libraries for preprocessing, feature extraction, and classification.

- Database: SQLite database is used for storing user information and prediction records.

### **Communication Interfaces**

The communication interface requirements describe how different modules within the system communicate with each other.

### **Communication Interface Details**

- The system supports communication between preprocessing, feature extraction, Machine Learning, and result generation modules.
- Internal data transfer is performed through Python-based processing modules and database connectivity.
- The system can support future cloud integration and online personality analysis features if internet connectivity is enabled.

### **Non-Functional Requirements**

The non-functional requirements define the quality standards, performance conditions, reliability, security, and operational characteristics of the fingerprint personality prediction system. These requirements ensure that the system performs efficiently, securely, and reliably during fingerprint analysis and personality prediction.

### **Performance Requirements**

The system must provide fast and accurate fingerprint processing and personality prediction results.

- The system should process fingerprint images with minimum delay.
- Machine Learning and Deep Learning algorithms should generate prediction results efficiently.
- The application should support smooth execution of image preprocessing and feature extraction operations.

The system should maintain good prediction accuracy and stable performance during continuous usage

### **Safety Requirements**

The system should ensure safe handling of fingerprint data and software operations.

- The application should avoid data corruption during image processing and prediction operations.
- Errors and processing failures should be detected and handled properly.
- Backup and recovery mechanisms should be available for important user data.
- The system should prevent unauthorized modification of stored fingerprint information.

## **Security Requirements**

The system should ensure safe handling of fingerprint data and software operations.

- The application should avoid data corruption during image processing and prediction operations.
- Errors and processing failures should be detected and handled properly.
- Backup and recovery mechanisms should be available for important user data.
- The system should prevent unauthorized modification of stored fingerprint information.

## **Software Quality Attributes**

The software should maintain high quality standards for usability, reliability, and maintainability.

- **Reliability:** The system should perform fingerprint processing and personality prediction consistently without failure.
- **Maintainability:** The software modules should be easy to update, modify, and maintain.
- **User Friendliness:** The graphical interface should be simple, understandable, and easy to use for all users.
- **Efficiency:** The application should utilize system resources efficiently during Machine Learning and image processing operations.
- **Portability:** The system should support execution on different Windows and Linux-based environments.

## **System Requirements**

The system requirements define the hardware, software, and database resources required for the successful implementation and execution of the AI-based fingerprint personality prediction system. These requirements ensure smooth fingerprint processing, Machine Learning operations, and personality prediction.

## **Database Requirements**

The database is used to store user information, fingerprint records, and prediction results generated by the system.

- **Operating System:** Windows 10 or Linux operating system.
- **Programming Language:** Python 3.7 or higher version.
- **IDE:** Spyder, VS Code, or Jupyter Notebook.
- **Libraries and Frameworks:** OpenCV, TensorFlow, Keras, NumPy, Pandas, Matplotlib, and Scikit-learn.

- Version Control: GitHub for project management and source code maintenance

### **Hardware Requirements**

The hardware requirements specify the minimum system configuration needed for image processing and Machine Learning operations.

- Processor: Intel Core i5 or higher processor.
- RAM: Minimum 8 GB RAM.
- Storage: Minimum 40 GB hard disk space.
- Input Devices: Keyboard, mouse, and fingerprint scanner or camera for image acquisition.
- Display: Standard monitor with graphical user interface support

### **Analysis Models: SDLC Model to be Applied**

The Software Development Life Cycle (SDLC) model defines the systematic process followed for designing, developing, testing, and deploying the proposed fingerprint personality prediction system. Since the project involves image processing, Machine Learning, and software integration, an iterative and structured SDLC approach is suitable for achieving accurate and efficient system development.

### **Requirements Analysis Phase**

In this phase, the functional and non-functional requirements of the system are identified and analyzed. The project objectives, user requirements, software requirements, and hardware requirements are studied carefully before development begins.

- Identification of system goals and functionalities.
- Analysis of fingerprint processing and personality prediction requirements.
- Study of Machine Learning algorithms and biometric technologies.
- Collection of datasets and software tools required for development.

### **System Design Phase**

The design phase focuses on creating the architecture and workflow of the proposed system. The structure of the software modules, data flow, and processing pipeline are designed during this stage.

- Design of system architecture and workflow diagrams.
- Preparation of ER diagrams, DFD diagrams, and use case diagrams.
- Design of preprocessing, feature extraction, and classification modules.
- Planning of database structure and user interface design.

## **1. Implementation Phase**

In this phase, the actual development of the fingerprint personality prediction system is carried out using Python and Machine Learning technologies.

- Development of image preprocessing and enhancement modules.
- Implementation of fingerprint feature extraction algorithms.
- Integration of Machine Learning and Deep Learning models such as SVM, Decision Tree, and CNN.
- Development of graphical user interface and database connectivity.

## **2. Testing and Integration Phase**

During this phase, all modules are integrated and tested to ensure proper system functionality and prediction accuracy.

- Unit testing of individual modules.
- Integration testing of preprocessing, classification, and prediction modules.
- Performance testing of Machine Learning models.
- Verification of fingerprint processing accuracy and personality prediction results.

## **3. Deployment and Maintenance Phase**

After successful testing, the system is deployed for practical use and future improvements are planned.

Deployment of the final application for user interaction

- Updating Machine Learning algorithms for improved accuracy.
- Addition of future features and system enhancements.

## **System Implementation Plan**

The System Implementation Plan describes the process of developing, integrating, testing, and deploying the AI-based fingerprint personality prediction system. The implementation process converts the proposed design and requirements into a fully functional software application capable of fingerprint analysis and personality prediction using Machine Learning techniques.

### **1. Development Environment Setup**

The first step involves preparing the software development environment and required tools for system implementation.

- Installation of Python programming environment and required libraries.
- Configuration of Machine Learning frameworks such as TensorFlow and Scikit-learn.
- Setup of IDEs such as Spyder or VS Code for development.

- Collection and organization of fingerprint datasets for training and testing.

## **2. Fingerprint Data Collection and Preprocessing**

In this phase, fingerprint images are collected and prepared for analysis using image processing techniques

- Collection of fingerprint images from datasets or fingerprint scanners.
- Image preprocessing operations such as grayscale conversion, noise removal, normalization, and segmentation.
- Enhancement of fingerprint ridge visibility for accurate feature extraction.
- Preparation of clean and structured image datasets for Machine Learning processing.

## **3. Feature Extraction and Analysis**

This stage focuses on extracting meaningful fingerprint characteristics required for personality prediction

- Extraction of ridge density, ridge flow, loops, whorls, arches, and minutiae points.
- Conversion of extracted features into structured numerical data.
- Analysis of fingerprint characteristics using image processing algorithms.
- Preparation of feature vectors for classification and training

## **4. Machine Learning Model Development**

The Machine Learning and Deep Learning models are developed and trained during this phase.

- Training of classification models such as SVM, Decision Tree, and CNN.
- Testing and validation of prediction accuracy using training datasets.
- Optimization of models for improved personality prediction performance.
- Integration of trained models into the software application.

## **5. User Interface and System Integration**

The system modules are integrated with the graphical user interface for smooth user interaction.

- Development of login, registration, fingerprint upload, and result display modules.
- Integration of preprocessing, feature extraction, and prediction modules.
- Establishment of database connectivity for storing records and prediction results.
- Verification of complete system workflow and module communication.

## **6. Testing and Final Deployment**

The final system is tested and prepared for deployment.

- Performance testing of image processing and prediction modules.
- Verification of system accuracy, reliability, and response time.
- Detection and correction of software errors and processing issues.
- Deployment of the final application for practical usage and future enhancements

## References

1. Maltoni, D., Maio, D., Jain, A. K., & Prabhakar, S. (2009). *Handbook of fingerprint recognition* (2nd ed.). Springer.
2. Jain, A. K., Flynn, P., & Ross, A. (2008). *Handbook of biometrics*. Springer.
3. Gonzalez, R. C., & Woods, R. E. (2018). *Digital image processing* (4th ed.). Pearson Education.
4. Goodfellow, I., Bengio, Y., & Courville, A. (2016). *Deep learning*. MIT Press.
5. Bishop, C. M. (2006). *Pattern recognition and machine learning*. Springer.
6. Haykin, S. (2009). *Neural networks and learning machines* (3rd ed.). Pearson Education.
7. Jain, A. K., Ross, A., & Prabhakar, S. (2004). An introduction to biometric recognition. *IEEE Transactions on Circuits and Systems for Video Technology*, 14(1), 4–20.
8. Cortes, C., & Vapnik, V. (1995). Support-vector networks. *Machine Learning*, 20(3), 273–297.
9. Breiman, L. (2001). Random forests. *Machine Learning*, 45(1), 5–32.
10. LeCun, Y., Bengio, Y., & Hinton, G. (2015). Deep learning. *Nature*, 521(7553), 436–444.
11. Otsu, N. (1979). A threshold selection method from gray-level histograms. *IEEE Transactions on Systems, Man and Cybernetics*, 9(1), 62–66.
12. Ross, A., Nandakumar, K., & Jain, A. K. (2006). *Handbook of multibiometrics*. Springer.
13. Ratha, N. K., Bolle, R. M., & Pandit, V. D. (2004). *Automatic fingerprint recognition systems*. Springer.
14. Schmidhuber, J. (2015). Deep learning in neural networks: An overview. *Neural Networks*, 61, 85–117.
15. Duda, R. O., Hart, P. E., & Stork, D. G. (2001). *Pattern classification* (2nd ed.). Wiley.

## **NEURO FINGERPRINT AI: PREDICTING PERSONALITY TRAITS THROUGH FINGERPRINT PATTERNS**

**R Sarala and Shruti Chavan**

Department of Information Technology,

D. Y. Patil College of Engineering (DYPCOE), Pune

Corresponding author E-mail: [rsaralaraja@gmail.com](mailto:rsaralaraja@gmail.com), [shruchavan23@gmail.com](mailto:shruchavan23@gmail.com)

### **Abstract**

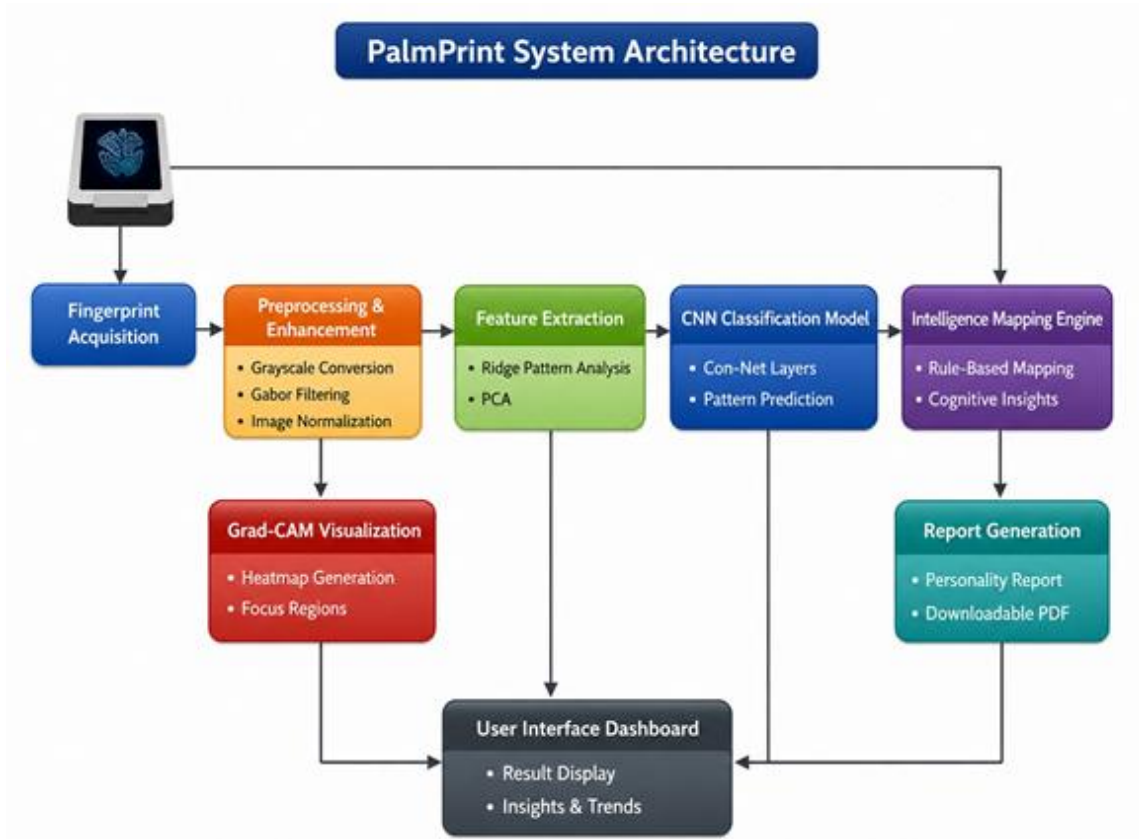
The implementation of the Talent-Print: AI-Based Fingerprint Learning and Personality Profiling System focuses on developing an intelligent software solution that combines fingerprint biometrics, image processing, machine learning, and deep learning techniques for automated personality prediction. The system acquires fingerprint images through scanners or image uploads and performs preprocessing operations such as grayscale conversion, noise removal, normalization, enhancement, and segmentation to improve image quality. Important fingerprint characteristics including ridge density, ridge flow, loops, whorls, arches, and minutiae points are extracted and transformed into feature vectors for analysis.

Machine Learning algorithms such as Support Vector Machine (SVM), Decision Tree (DT), and Deep Learning models such as Convolutional Neural Networks (CNN) are employed to classify fingerprint patterns and generate personality profiling results. The implementation also includes database management, user authentication, result visualization, and report generation modules. The modular architecture ensures efficient processing, maintainability, scalability, and user-friendly interaction. The proposed system demonstrates the integration of AI-driven technologies with biometric analysis to provide an automated and non-invasive approach for personality assessment and behavioral profiling.

**Keywords:** Fingerprint Biometrics, Artificial Intelligence, Machine Learning, Deep Learning, Personality Prediction, Dermatoglyphics, Image Processing, Convolutional Neural Network (CNN), Support Vector Machine (SVM), Decision Tree, Ridge Pattern Analysis, Minutiae Extraction, Feature Extraction, Biometric Profiling, SQLite Database.

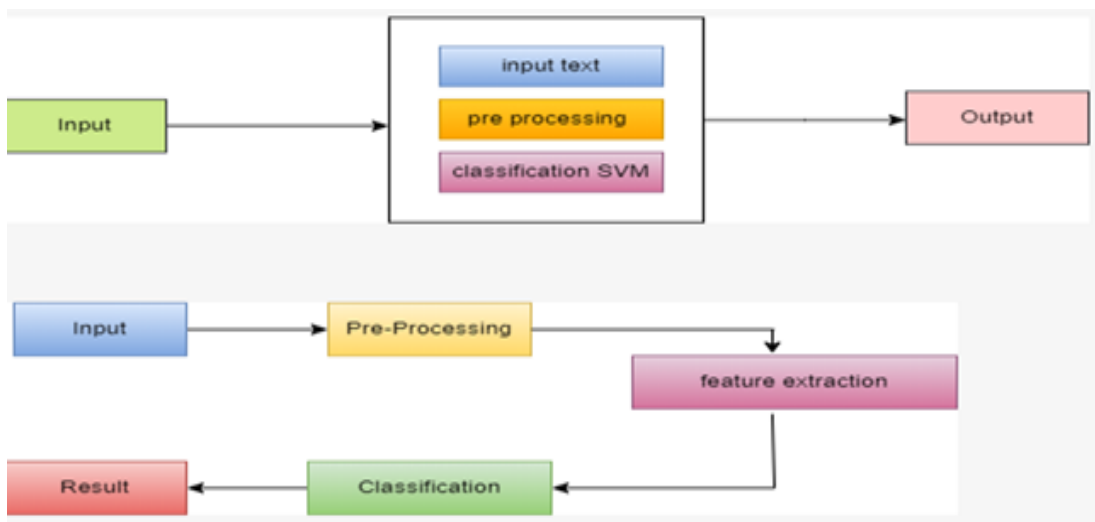
## System Architecture

The system architecture describes the high-level structural arrangement of all major components involved in the software.



**Figure 1: System Architecture**

## Dataflow Diagrams



**Figure 2: Dataflow Diagram**

### UML Diagrams

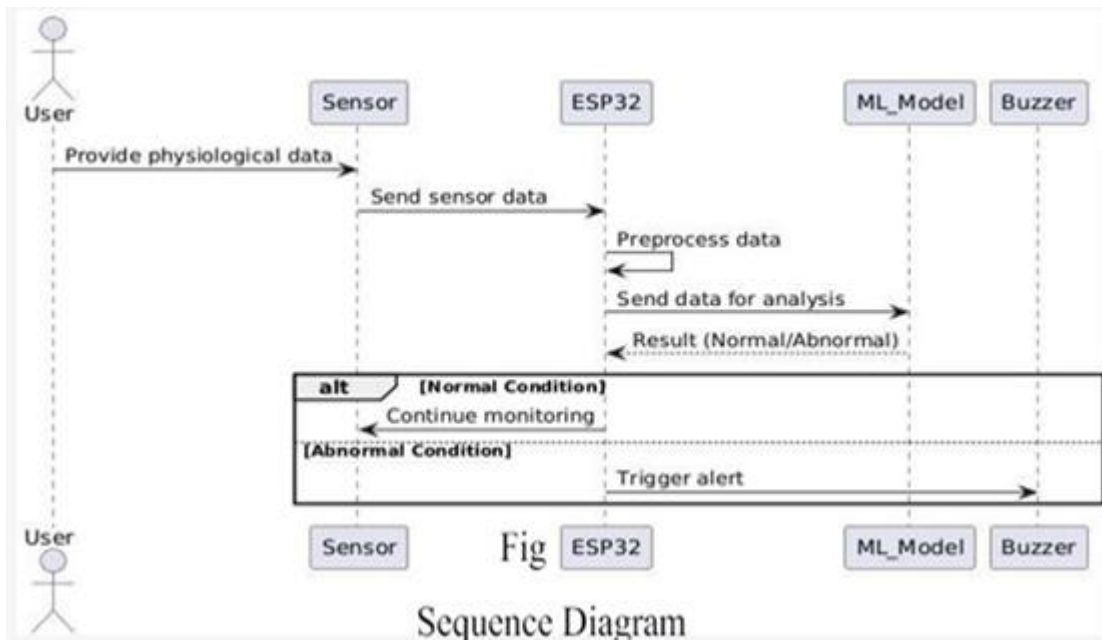


Figure 3: UML Diagram

### ER Diagrams

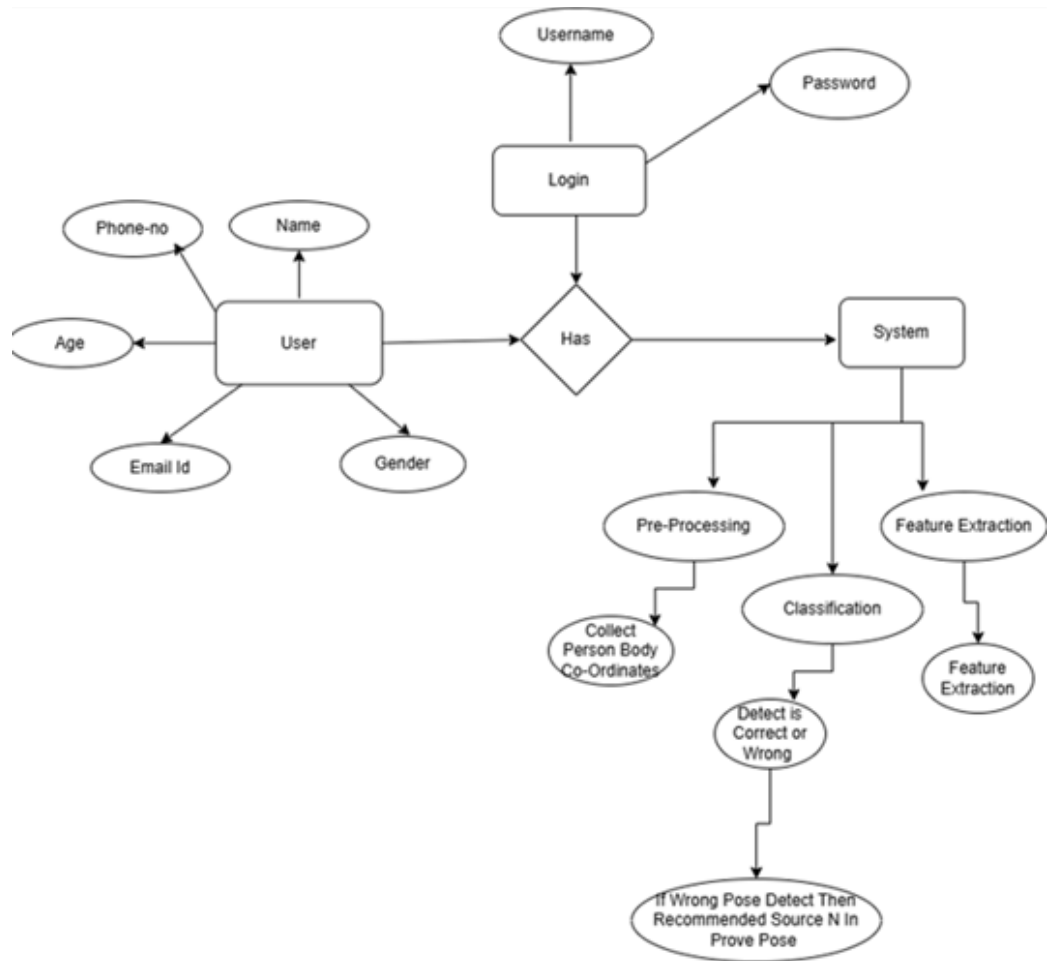


Figure 4: ER Diagram

## **Overview**

The implementation of the "Talent-Print: AI Based Fingerprint Learning and Personality Profiling" system focuses on developing an intelligent software application capable of analyzing fingerprint patterns and predicting personality traits using Artificial Intelligence and Machine Learning techniques. The system integrates image processing, biometric analysis, and intelligent classification algorithms to provide automated personality prediction based on fingerprint characteristics.

The proposed system captures fingerprint images through image upload or scanning modules and performs preprocessing operations such as grayscale conversion, noise removal, normalization, and image enhancement. These operations improve fingerprint quality and prepare the images for accurate feature extraction and classification.

After preprocessing, the system extracts important fingerprint features including ridge density, ridge flow, loops, whorls, arches, and minutiae points. The extracted features are then analyzed using Machine Learning and Deep Learning algorithms such as Support Vector Machine (SVM), Decision Tree, and Convolutional Neural Networks (CNN) to identify relationships between fingerprint patterns and personality traits.

The system is designed to provide:

- Automated fingerprint image processing
- Intelligent personality prediction
- User-friendly graphical interface

The implementation ensures efficient fingerprint processing, improved prediction accuracy, reduced manual analysis, and scientific personality assessment through AI-driven technologies.

## **List of Modules**

The "Talent-Print: AI Based Fingerprint Learning and Personality Profiling" system is developed using a modular architecture where each module performs a specific operation related to fingerprint processing and personality prediction. The major modules of the system are described.

### **1. Fingerprint Image Acquisition Module**

The Fingerprint Image Acquisition Module is responsible for collecting fingerprint images from the user.

- Allows users to upload or capture fingerprint images.
- Supports fingerprint image storage for processing and analysis.
- Ensures proper image acquisition for accurate preprocessing and feature extraction.

## **2. Image Preprocessing Module**

The Image Preprocessing Module improves the quality of fingerprint images before analysis.

- Performs grayscale conversion and normalization.
- Removes image noise and unwanted distortions.
- Enhances fingerprint ridge visibility using image enhancement techniques.
- Segments fingerprint regions for accurate feature extraction.

## **3. Feature Extraction Module**

The Feature Extraction Module identifies important fingerprint characteristics required for classification

- Extracts ridge density and ridge flow patterns.
- Identifies loops, whorls, arches, and minutiae points.
- Converts extracted features into structured numerical data.
- Provides feature vectors for Machine Learning analysis.

## **4. Machine Learning Module**

The Machine Learning Module performs fingerprint classification and personality prediction

- Uses algorithms such as SVM, Decision Tree, and CNN.
- Trains and tests prediction models using fingerprint datasets.
- Identifies relationships between fingerprint features and personality traits.
- Generates personality prediction results based on biometric analysis.

## **5. Database Management Module**

The Database Management Module stores system and user-related information

- Stores fingerprint images and extracted features.
- Maintains user registration and login information.
- Stores personality prediction results and historical records.
- Supports secure and organized data management.

## **6. User Interface Module**

The User Interface Module provides interaction between the user and the system

- Provides login and registration functionality.
- Displays fingerprint processing and prediction results.
- Offers a simple and user-friendly graphical interface.
- Allows users to upload fingerprints and view personality analysis reports.

## **Tools and Technologies Used**

The proposed system uses various software tools, Machine Learning frameworks, image processing libraries, and development technologies for fingerprint analysis and personality prediction. These tools help in implementing efficient preprocessing, feature extraction, classification, and result generation operations.

### **1. Hardware Tools**

#### **Fingerprint scanner / Fingerprint Sensor**

- The fingerprint scanner is the main input device of the system.
- It is responsible for capturing fingerprint images for analysis and personality prediction.
- Provides accurate fingerprint ridge patterns and minutiae structures.
- Supports real-time fingerprint acquisition for preprocessing and classification.

#### **Processor / Computing System**

- The processor performs image processing and Machine Learning operations
- Handles fingerprint preprocessing, feature extraction, and classification tasks
- Supports execution of Deep Learning algorithms and data processing libraries.
- Ensures smooth and efficient system performance.

### **2. Storage Device**

The storage system is used for maintaining fingerprint datasets and prediction records.

- Stores fingerprint images and extracted feature data.
- Maintains user information and personality prediction reports.
- Supports dataset management for Machine Learning model training.

#### **Input Device**

Input devices allow user interaction with the system.

- Keyboard and mouse are used for system operation and navigation.
- Supports fingerprint image upload and application control.
- Helps users interact with graphical user interface modules.

#### **Display Monitor**

The display monitor provides visual output and system interaction.

- Displays fingerprint images and preprocessing results.
- Shows personality prediction reports and analysis graphs.
- Improves user interaction and result visualization.

### **3. Software Tools**

#### **Python**

Python is used as the primary programming language for system development.

- Supports Machine Learning and image processing libraries.
- Handles preprocessing, feature extraction, and prediction operations.
- Provides flexibility for AI-based application development

#### **OpenCV**

Python is used for machine learning and backend development.

- Handles data preprocessing, feature extraction, and model training.
- Libraries such as NumPy and Pandas are used for data manipulation.
- Machine learning models are built using frameworks like Scikit-learn and TensorFlow.
- Provides flexibility and ease of development for AI-based applications.

#### **TensorFlow**

Flask Framework Flask is a lightweight web framework used to develop the user interface.

- Used to build a web-based dashboard for real-time monitoring.
- Integrates backend processing with frontend display.
- Allows users to view ECG data, predictions, and alerts.
- Supports REST APIs for communication between device and server.

#### **Scikit-learn**

Scikit-learn is used for Machine Learning model development.

- Implements algorithms such as SVM and Decision Tree.
- Supports training, testing, and prediction operations.
- Provides model evaluation and performance analysis tools.

#### **SQLite Database**

SQLite is used for storing user data and prediction records.

- Maintains fingerprint information and classification results.
- Supports secure and organized data storage.

### **4. Technologies Used**

#### **Artificial Intelligence (AI)**

Artificial Intelligence enables intelligent personality prediction using biometric data.

- Automates fingerprint analysis and classification.
- Reduces manual interpretation and human error.

- Improves efficiency and reliability of personality assessment.
- Improves accessibility and mobility of healthcare solutions.

### **Machine Learning**

Machine Learning algorithms are used for fingerprint classification and prediction.

- SVM is used for classification of fingerprint patterns.
- Decision Tree improves prediction and analysis efficiency.
- CNN performs automatic fingerprint feature learning and recognition.

These algorithms analyze extracted features and classify cardiac conditions into normal or abnormal categories.

### **Image Processing**

Image processing techniques improve fingerprint quality and feature extraction

- Removes image noise and distortions.
- Enhances ridge structures and minutiae visibility.
- Supports accurate fingerprint analysis and classification.
- Supports efficient execution of trained ML models.

### **Data Processing (NumPy, Pandas)**

Data processing tools help in preparing sensor data for analysis.

- NumPy: Used for numerical computations and array operations.
- Pandas: Used for data cleaning, transformation, and organization. These tools ensure that the data is structured and suitable for machine learning.

### **Data Visualization**

Visualization tools are used for graphical analysis and result representation.

- Display fingerprint analysis results and prediction graphs.
- Help users understand personality prediction outputs.
- Improve interpretation of Machine Learning performance and accuracy.
- Used in dashboards and analysis reports.

### **Algorithm Details**

The proposed system uses Machine Learning and Deep Learning techniques for fingerprint-based personality prediction. The system processes fingerprint images, extracts important biometric features, and classifies personality traits using intelligent algorithms.

### **Step 1: Fingerprint Image Collection**

Fingerprint images are collected from users through fingerprint scanners or image upload modules.

- The system accepts fingerprint images for preprocessing and analysis.
- Collected images are stored temporarily for feature extraction and classification.

### **Step 2: Image Preprocessing**

- Grayscale conversion is applied to simplify image processing.
- Noise removal techniques are used to eliminate distortions.
- Image enhancement and normalization improve ridge visibility.
- Segmentation is performed to isolate important fingerprint regions.

### **Step 3: Feature Extraction**

The system extracts meaningful fingerprint characteristics required for personality prediction.

- Ridge density and ridge flow patterns are identified.
- Loops, whorls, and arches are detected.
- Minutiae points such as ridge endings and bifurcations are extracted.
- Extracted features are converted into numerical data for Machine Learning analysis.

### **Step 4: Model Training**

Machine Learning and Deep Learning models are trained using fingerprint datasets.

- Support Vector Machine (SVM) is used for classification.
- Decision Tree algorithms improve prediction analysis.
- Convolutional Neural Networks (CNN) perform intelligent fingerprint pattern recognition.
- Training datasets are used to improve prediction accuracy and model performance.

### **Step 5: Personality Prediction**

The trained models analyse extracted fingerprint features and predict personality traits.

- The system identifies relationships between fingerprint patterns and personality dimensions.
- Personality prediction results are generated automatically.
- The final output is displayed through the graphical user interface.

### **Step 6: Decision & Alert**

The system presents the final personality analysis results to the user.

- Displays predicted personality characteristics and behavioural analysis.

- Provides graphical and textual representation of prediction results.
- Stores prediction history and user information in the database.

## References

1. Maltoni, D., Maio, D., Jain, A. K., & Prabhakar, S. (2009). *Handbook of fingerprint recognition* (2nd ed., pp. 45–210). Springer.
2. Jain, A. K., Ross, A., & Prabhakar, S. (2004). An introduction to biometric recognition. *IEEE Transactions on Circuits and Systems for Video Technology*, 14(1), 4–20.
3. Gonzalez, R. C., & Woods, R. E. (2018). *Digital image processing* (4th ed., pp. 95–480). Pearson Education.
4. Goodfellow, I., Bengio, Y., & Courville, A. (2016). *Deep learning* (pp. 321–520). MIT Press.
5. Bishop, C. M. (2006). *Pattern recognition and machine learning* (pp. 179–340). Springer.
6. Cortes, C., & Vapnik, V. (1995). Support-vector networks. *Machine Learning*, 20(3), 273–297.
7. Breiman, L. (2001). Random forests. *Machine Learning*, 45(1), 5–32.
8. LeCun, Y., Bengio, Y., & Hinton, G. (2015). Deep learning. *Nature*, 521(7553), 436–444.
9. Haykin, S. (2009). *Neural networks and learning machines* (3rd ed., pp. 251–620). Pearson Education.
10. Otsu, N. (1979). A threshold selection method from gray-level histograms. *IEEE Transactions on Systems, Man and Cybernetics*, 9(1), 62–66.
11. Ross, A., Nandakumar, K., & Jain, A. K. (2006). *Handbook of multibiometrics* (pp. 101–305). Springer.
12. Ratha, N. K., Bolle, R. M., & Pandit, V. D. (2004). *Automatic fingerprint recognition systems* (pp. 55–280). Springer.
13. Schmidhuber, J. (2015). Deep learning in neural networks: An overview. *Neural Networks*, 61, 85–117.
14. Pedregosa, F., Varoquaux, G., Gramfort, A., et al. (2011). Scikit-learn: Machine learning in Python. *Journal of Machine Learning Research*, 12, 2825–2830.
15. Bradski, G. (2000). The OpenCV library. *Dr. Dobb's Journal of Software Tools*, 25(11), 12.

## **PRINTPERSONA: AI SYSTEM FOR LEARNING STYLE AND PERSONALITY PREDICTION USING FINGERPRINTS**

**Mayuri Rathi<sup>1</sup> and Vivekanand B Shere<sup>2</sup>**

<sup>1</sup>Department of Information Technology,

<sup>2</sup>Department of E&TC

D. Y. Patil College of Engineering (DYPCOE), Pune

Corresponding author E-mail: [2014mmsoni@gmail.com](mailto:2014mmsoni@gmail.com), [ybshere@dypcoeakurdi.ac.in](mailto:ybshere@dypcoeakurdi.ac.in)

### **Abstract**

The testing and evaluation phase of the Talent-Print: AI-Based Fingerprint Learning and Personality Profiling System was conducted to verify the functionality, reliability, performance, and prediction capability of the developed application. Various testing methodologies including Unit Testing, Integration Testing, System Testing, Performance Testing, Reliability Testing, and User Acceptance Testing (UAT) were performed to ensure smooth operation of all system modules. The results demonstrated successful integration of fingerprint image acquisition, preprocessing, feature extraction, machine learning classification, database management, and personality prediction functionalities.

The implemented system effectively analyzed fingerprint images and extracted significant biometric features such as loops, whorls, arches, ridge density, ridge flow, and minutiae points. Machine Learning and Deep Learning algorithms including Support Vector Machine (SVM), Decision Tree (DT), and Convolutional Neural Networks (CNN) successfully processed extracted features and generated personality profiling results. The graphical user interface provided efficient user interaction through login, dashboard, fingerprint upload, machine learning processing, and personality report generation modules.

Experimental results indicate that the proposed system offers an automated, efficient, and non-invasive approach to personality assessment. The integration of image processing and intelligent classification techniques reduced manual effort and improved analysis speed. The system has potential applications in educational guidance, career counseling, recruitment support, and personal development while providing a foundation for future research in biometric-based behavioral analysis.

**Keywords:** Software Testing, Unit Testing, Integration Testing, System Testing, Performance Testing, Reliability Testing, User Acceptance Testing, Fingerprint Biometrics, Personality Prediction, Artificial Intelligence, Machine Learning, Deep Learning, CNN, SVM, Image Processing, Feature Extraction, Behavioral Analysis, Biometric Profiling.

## Types of Testing

- **Unit Testing:** Each module (sensor reading, ML model, alert system) is tested individually.
- **Integration Testing:** Ensures proper communication between hardware and software modules.
- **System Testing:** Tests the complete system functionality including data collection and alert generation.
- **Performance Testing:** Measures response time, accuracy, and latency of the system.
- **Reliability Testing:** Ensures consistent operation over long monitoring periods.
- **User Acceptance Testing (UAT):** Validates system usability for end-users and healthcare monitoring.

## Result and Discussion

**Table 1: Test cases and result**

TC ID	Test Case Description	Input Data	Expected Result	Status
TC_01	Verify user registration with valid details	Name: Mohit, Email: mohit@gmail.com, Password: Test@123	User account created successfully	Pass
TC_02	Verify registration with existing email	Existing Email: mohit@gmail.com	Error message displayed	Pass
TC_03	Verify login with valid credentials	Email: mohit@gmail.com, Password: Test@123	User logged in successfully	Pass
TC_04	Verify login with invalid password	Email: mohit@gmail.com, Password: Wrong123	Login failed with warning	Pass
TC_05	Verify forgot password functionality	Email: mohit@gmail.com	Reset link sent to email	Pass
TC_06	Verify empty login fields	Email: Blank, Password: Blank	Validation message displayed	Pass
TC_07	Verify password masking	Password: Test@123	Password hidden during typing	Pass
TC_08	Verify logout functionality	Click Logout Button	User logged out successfully	Pass
TC_09	Verify session timeout after inactivity	Idle for 15 minutes	Session expired automatically	Pass
TC_10	Verify dashboard loading after login	Valid Login Credentials	Dashboard displayed correctly	Pass
TC_11	Verify personality test page opens correctly	Click "Start Test"	Test page loaded successfully	Pass
TC_12	Verify all personality questions are displayed	Open Test Page	Questions visible properly	Pass
TC_13	Verify next button navigation	Click Next Button	Moves to next question	Pass
TC_14	Verify previous button navigation	Click Previous Button	Returns to previous question	Pass
TC_15	Verify mandatory question validation	Leave one question unanswered	Warning shown for unanswered questions	Pass
TC_16	Verify submission after completing test	Answer all questions and submit	Test submitted successfully	Pass
TC_17	Verify result generation speed	Submit completed test	Results displayed within expected time	Pass
TC_18	Verify personality prediction accuracy	Predefined answer dataset	Correct personality type generated	Pass
TC_19	Verify graphical result visualization	Completed test result	Charts displayed correctly	Pass
TC_20	Verify compatibility on Google Chrome	Open application in Chrome	Application works properly	Pass
TC_21	Verify compatibility on Microsoft Edge	Open application in Edge	Application works properly	Pass
TC_22	Verify compatibility on Mozilla Firefox	Open application in Firefox	Application works properly	Pass
TC_23	Verify responsive design on mobile devices	Open app on Android phone	UI adjusts correctly	Pass
TC_24	Verify responsive design on tablets	Open app on tablet	UI displayed properly	Pass
TC_25	Verify invalid email format during registration	Email: mohitgmail.com	Validation error displayed	Pass

The implemented system successfully demonstrates fingerprint-based personality prediction using Artificial Intelligence and Machine Learning techniques. The proposed

system performs fingerprint image preprocessing, feature extraction, classification, and personality prediction through automated biometric analysis.

### Key Results

- Accurate fingerprint pattern recognition using image processing techniques.
- Efficient extraction of fingerprint features such as loops, whorls, arches, and minutiae points.
- Successful implementation of Machine Learning and Deep Learning algorithms for personality prediction.
- Fast and automated personality analysis through intelligent classification models. Reduced dependency on traditional questionnaire-based personality assessment methods.

### Discussion

The system performs efficiently due to the integration of Machine Learning, Deep Learning, and image processing technologies. Fingerprint preprocessing and feature extraction techniques improve the quality and accuracy of fingerprint analysis, while algorithms such as SVM, Decision Tree, and CNN enhance prediction performance and automation.

- Compared to traditional personality assessment systems, the proposed "Talent-Print" system:
- Provides automated and scientific personality prediction.
- Reduces human error and subjective interpretation.
- Offers fast and non-invasive biometric analysis.

Supports educational guidance, career counseling, and personal development.

### GUI Results

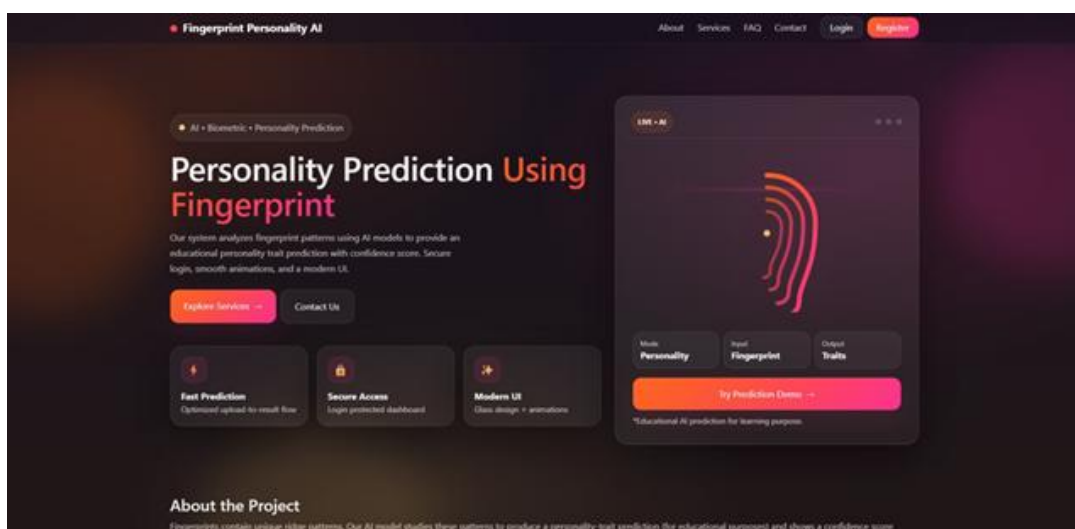


Figure 1: Webpage Overview

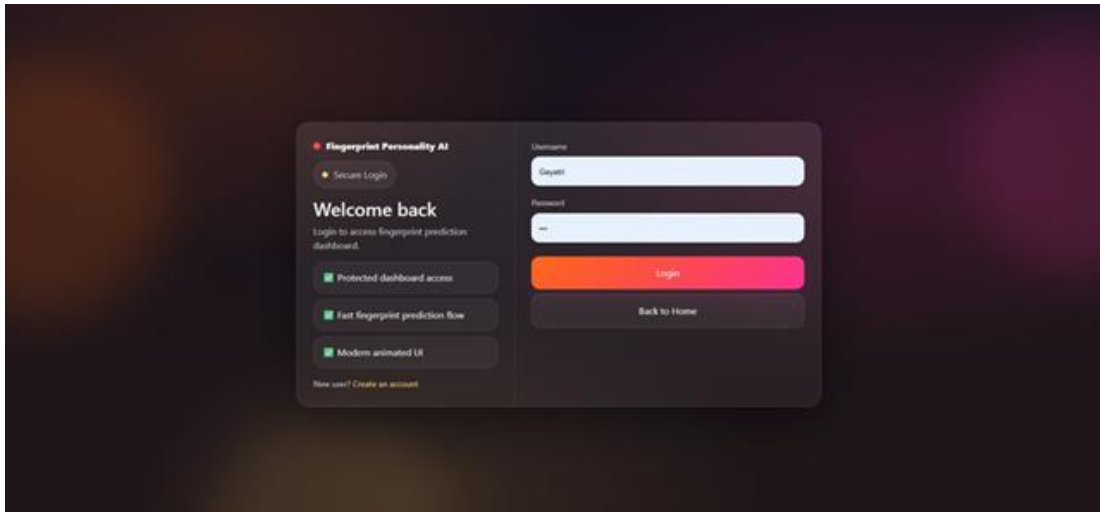


Figure 2: Login page

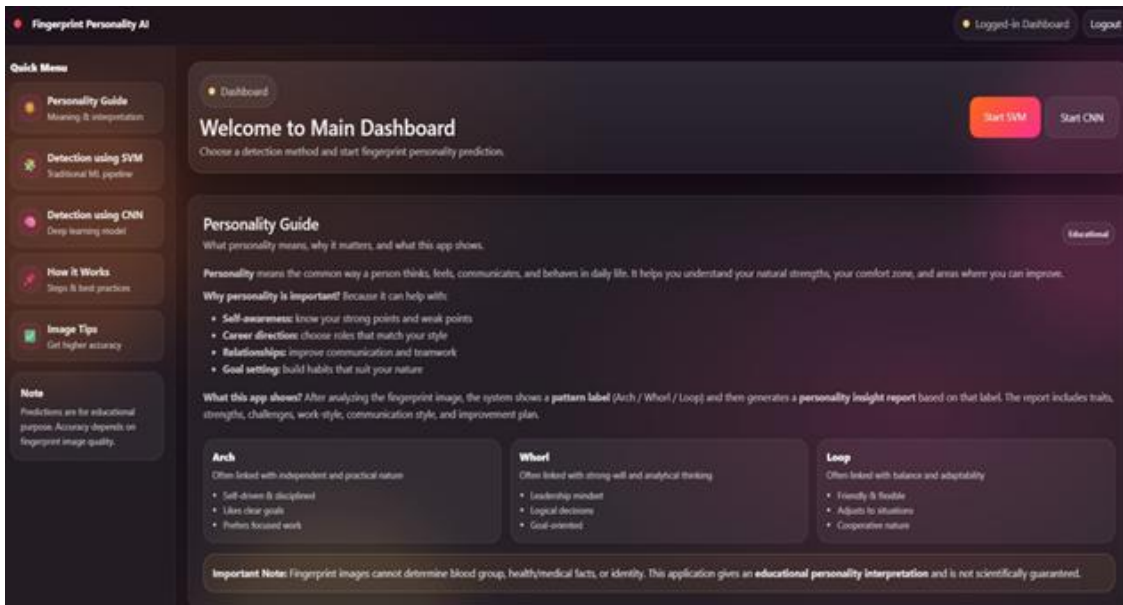


Figure 3: Dashboard

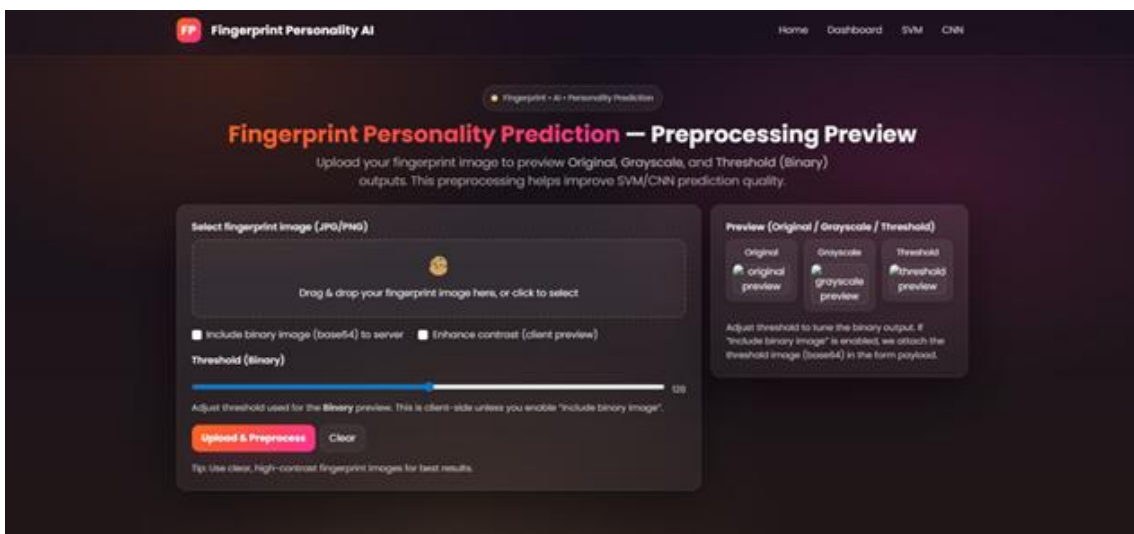


Figure 4: ML Model Processing

## Personality Report

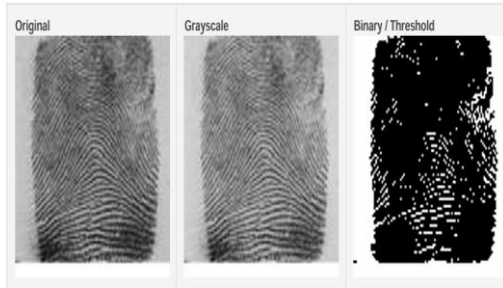
### Fingerprint Personality AI – Report

Date: 14 Feb 2026, 03:23 PM

Model: CNN + Gemini

Detected Pattern: Arch

Confidence: 85.57%



#### Personality Insight

Fingerprint pattern detected: Arch

Model confidence: 85.57%

---

#### ## 1) Quick Summary

You are likely an independent and practical individual, focused on achieving your goals. Your approach to life is often disciplined and methodical, preferring clear steps and tangible results.

#### ## 2) Key Traits

- \*\*\*Independent Thinker:\*\* You prefer to form your own opinions and chart your own course.
- \*\*\*Self-Motivated:\*\* You don't always need external pushes; your drive comes from within.
- \*\*\*Practical Mindset:\*\* You focus on what works, what's useful, and what's real.
- \*\*\*Disciplined & Orderly:\*\* You appreciate structure, rules, and a systematic approach.
- \*\*\*Goal-Oriented:\*\* You set your sights on targets and work consistently towards them.
- \*\*\*Prefers Solo Work:\*\* You often achieve your best results when working alone or with minimal supervision.
- \*\*\*Reliable:\*\* Once you commit, you are dependable and see things through.
- \*\*\*Methodical:\*\* You like to break down tasks into logical steps.

#### ## 3) Strengths

- \*\*\*Strong Willpower:\*\* You have a firm resolve and can stick to your decisions.
- \*\*\*Excellent Planner:\*\* You are good at organizing tasks and creating logical action plans.
- \*\*\*Consistency:\*\* You maintain effort over time, leading to steady progress.
- \*\*\*Determination:\*\* You are persistent and don't easily give up on your objectives.
- \*\*\*Self-Reliance:\*\* You trust your own abilities and prefer to handle things yourself.
- \*\*\*Practical Problem-Solver:\*\* You are good at finding realistic and effective solutions.

- \*\*\*Attention to Detail:\*\* You notice important specifics that others might miss.
- \*\*\*Resilience:\*\* You can bounce back from setbacks and learn from experiences.

#### ## 4) Challenges / Blind Spots

- \*\*\*Can Be Stubborn:\*\* Once your mind is made up, it can be difficult to change your perspective.
- \*\*\*Less Expressive Socially:\*\* You may find it hard to openly share your feelings or engage in small talk.
- \*\*\*Rigidity:\*\* You might sometimes resist new ideas or unexpected changes.
- \*\*\*Difficulty Asking for Help:\*\* Your independence can make it hard to reach out when needed.
- \*\*\*Appearing Unapproachable:\*\* Your serious and focused nature might sometimes be misunderstood.
- \*\*\*Over-Reliance on Logic:\*\* You might overlook the emotional aspects of situations.
- \*\*\*Resistance to Abstract Ideas:\*\* You prefer concrete facts over theoretical discussions.
- \*\*\*May Miss Broader Picture:\*\* Over-focusing on details can sometimes obscure the larger context.

#### ## 5) Work Style & Best-fit Roles

- \*\*\*Structured Environment:\*\* You thrive in workplaces with clear guidelines and expectations.
- \*\*\*Independent Tasks:\*\* You excel in roles that allow you to work autonomously.
- \*\*\*Focus on Results:\*\* You are driven by tangible outcomes and measurable progress.
- \*\*\*Attention to Detail:\*\* You are well-suited for tasks requiring precision and accuracy.
- \*\*\*Project-Oriented:\*\* You enjoy managing projects from start to finish.
- \*\*\*Hands-on Work:\*\* You prefer practical application over purely theoretical roles.
- \*\*\*Best-fit Roles:\*\* Engineering, Accounting, Data Analysis, Research, Architecture, Project Management, Skilled Trades, IT Administration, Technical Writing, Quality Assurance.

#### ## 6) Learning Style & Decision-Making

- \*\*\*Hands-on Learner:\*\* You learn best by doing and experiencing things directly.
- \*\*\*Practical Application:\*\* You need to see how information can be used in the real world.
- \*\*\*Clear Instructions:\*\* You prefer detailed, step-by-step guidance.
- \*\*\*Systematic Approach:\*\* You like to break down complex topics into manageable parts.
- \*\*\*Logical Decision-Making:\*\* You base your choices on facts, data, and rational analysis.
- \*\*\*Careful Consideration:\*\* You take your time to weigh pros and cons before deciding.
- \*\*\*Risk-Averse:\*\* You tend to avoid impulsive decisions and prefer predictable outcomes.
- \*\*\*Evidence-Based:\*\* You look for proof and concrete evidence to support choices.

#### ## 7) Relationships & Communication

- \*\*\*Values Loyalty:\*\* You appreciate consistent and dependable friendships and partnerships.
- \*\*\*Actions Over Words:\*\* You often show your care and commitment through your deeds rather than verbal expressions.
- \*\*\*Slow to Open Up:\*\* It takes time for you to trust and share deeply with others.
- \*\*\*Direct Communicator:\*\* You prefer straightforward and factual conversations.
- \*\*\*Dislikes Small Talk:\*\* You might find casual, surface-level conversations less engaging.
- \*\*\*Can Seem Reserved:\*\* Your natural quietness might be mistaken for disinterest or aloofness.
- \*\*\*Struggles with Emotional Expression:\*\* You may find it challenging to articulate complex emotions.
- \*\*\*Respects Personal Space:\*\* You understand and value the need for individual boundaries.

#### ## 8) Stress Triggers + How to Manage

- \*\*\*Stress Triggers:\*\*
  - Unpredictable or chaotic environments.

## References

1. Pressman, R. S. (2015). *Software engineering: A practitioner's approach* (8th ed., pp. 525–610). McGraw-Hill.
2. Sommerville, I. (2016). *Software engineering* (10th ed., pp. 210–345). Pearson Education.
3. Myers, G. J., Sandler, C., & Badgett, T. (2011). *The art of software testing* (3rd ed., pp. 25–185). Wiley.
4. Maltoni, D., Maio, D., Jain, A. K., & Prabhakar, S. (2009). *Handbook of fingerprint recognition* (pp. 125–310). Springer.

5. Jain, A. K., Ross, A., & Prabhakar, S. (2004). An introduction to biometric recognition. *IEEE Transactions on Circuits and Systems for Video Technology*, 14(1), 4–20.
6. Gonzalez, R. C., & Woods, R. E. (2018). *Digital image processing* (4th ed., pp. 315–645). Pearson Education.
7. Goodfellow, I., Bengio, Y., & Courville, A. (2016). *Deep learning* (pp. 387–620). MIT Press.
8. LeCun, Y., Bengio, Y., & Hinton, G. (2015). Deep learning. *Nature*, 521(7553), 436–444.
9. Cortes, C., & Vapnik, V. (1995). Support-vector networks. *Machine Learning*, 20(3), 273–297.
10. Breiman, L. (2001). Random forests. *Machine Learning*, 45(1), 5–32.
11. Haykin, S. (2009). *Neural networks and learning machines* (3rd ed., pp. 401–720). Pearson Education.
12. Pedregosa, F., Varoquaux, G., Gramfort, A., et al. (2011). Scikit-learn: Machine learning in Python. *Journal of Machine Learning Research*, 12, 2825–2830.
13. Bradski, G. (2000). The OpenCV library. *Dr. Dobb's Journal of Software Tools*, 25(11), 120–126.
14. Ross, A., Nandakumar, K., & Jain, A. K. (2006). *Handbook of multibiometrics* (pp. 155–350). Springer.
15. Otsu, N. (1979). A threshold selection method from gray-level histograms. *IEEE Transactions on Systems, Man and Cybernetics*, 9(1), 62–66.

## **NEXTGEN TALENT AI: BIOMETRIC FINGERPRINT ANALYSIS FOR PERSONALITY INSIGHTS**

**Mayuri Rathi<sup>1</sup> and Shweta Banait<sup>2</sup>**

<sup>1</sup>Department of Information Technology,

<sup>2</sup>Department of Artificial Intelligence and Data Science

D. Y. Patil College of Engineering (DYPCOE), Pune

Corresponding author E-mail: [2014mmsoni@gmail.com](mailto:2014mmsoni@gmail.com), [shweta.kanhere@gmail.com](mailto:shweta.kanhere@gmail.com)

### **Abstract**

The Talent-Print: AI-Based Fingerprint Learning and Personality Profiling System presents an innovative approach for personality assessment by integrating fingerprint biometrics with Artificial Intelligence, Machine Learning, and Deep Learning technologies. The system successfully performs fingerprint image acquisition, preprocessing, feature extraction, classification, and personality prediction through automated biometric analysis. Important fingerprint characteristics such as loops, whorls, arches, ridge density, ridge flow, and minutiae points are analyzed using image processing techniques and intelligent classification algorithms including Support Vector Machine (SVM), Decision Tree (DT), and Convolutional Neural Networks (CNN). The developed system demonstrates the practical application of AI-driven biometric analysis for personality profiling while reducing dependence on conventional questionnaire-based assessment methods. The implementation provides a fast, automated, and non-invasive solution capable of supporting educational guidance, career counseling, recruitment analysis, and personal development activities. The modular design ensures maintainability, scalability, and future integration with advanced technologies. Although the proposed system shows promising results, its performance depends on the quality of fingerprint images, dataset availability, and machine learning model training. Future enhancements include the integration of advanced deep learning architectures, cloud-based processing, real-time fingerprint analysis, mobile application support, and multi-biometric personality prediction systems. The project establishes a foundation for further research in intelligent behavioral analysis and biometric-based personality assessment.

**Keywords:** Artificial Intelligence (AI), Machine Learning, Deep Learning, Fingerprint Biometrics, Personality Prediction, Dermatoglyphics, Behavioral Analysis, Fingerprint Classification, Convolutional Neural Network (CNN), Support Vector Machine (SVM), Decision Tree, Image Processing, Ridge Pattern Analysis, Minutiae Extraction, Biometric Profiling, Career Guidance, Educational Assessment, Human Behavior Analysis.

## **Advantages**

- The system provides an automated and scientific approach for personality prediction using fingerprint biometrics.
- It reduces dependency on traditional questionnaire-based personality assessment methods.
- The proposed system performs fast and non-invasive personality analysis. • Fingerprint patterns are unique and permanent, which improves reliability and consistency in analysis.
- Machine Learning and Deep Learning algorithms improve prediction accuracy and automation.
- The system minimizes human error and subjective interpretation during personality assessment.
- It can be useful in educational guidance, career counseling, recruitment analysis, and personal development.

## **Limitations**

- Prediction accuracy depends on the quality of fingerprint images and training datasets.
- Small or unbalanced datasets may affect Machine Learning model performance.
- Fingerprint distortions, noise, or improper image capture can reduce analysis accuracy.
- Personality prediction based on fingerprints is still an evolving research area and may not provide completely accurate psychological evaluation.
- Deep Learning models may require higher computational resources and processing power. The system currently focuses only on fingerprint biometrics and does not include other behavioral or biometric factors.

## **Applications**

- The system can be used in educational institutions for learning style and personality analysis.
- It can assist career counseling and recruitment processes through personality profiling.
- The proposed solution can support personal development and behavioral analysis applications.
- It can be used for biometric research and dermatoglyphics studies.
- The system may help organizations in team management and candidate assessment.

## **Project Plan**

### **1. Resource Allocation Plan**

The development of the “Talent-Print: AI Based Fingerprint Learning and Personality Profiling” system requires proper allocation of software resources, datasets, development tools, and human expertise. The project involves Machine Learning, image processing, and biometric analysis technologies for fingerprint-based personality prediction. Software resources include Python programming language, OpenCV, TensorFlow, Keras, Scikitlearn, NumPy, Pandas, and SQLite database for system implementation and data processing. Development environments such as Spyder, VS Code, and Jupyter Notebook are used for coding, debugging, and model training. Hardware resources include computers with Intel i5 processors, minimum 8 GB RAM, storage devices, and fingerprint scanners or fingerprint image datasets. Human resources involve software developers, Machine Learning developers, testers, and researchers working together for successful project implementation. Proper management of time, datasets, computational resources, and development tasks is maintained to ensure smooth project execution.

### **2. Risk Management Plan**

The project identifies several risks related to fingerprint image processing, Machine Learning prediction, and system implementation. These risks may affect system performance, prediction accuracy, and reliability. Possible risks include poor fingerprint image quality, insufficient datasets, inaccurate feature extraction, Machine Learning misclassification, overfitting during model training, software bugs, and database management issues. Improper fingerprint capture and image distortions may also reduce prediction efficiency. To minimize these risks, preprocessing techniques, dataset validation, testing procedures, and model optimization methods are implemented. Multiple Machine Learning algorithms are tested and compared to improve classification accuracy and system reliability. Regular debugging, performance analysis, and validation processes are also carried out to reduce software and prediction errors.

### **3. Quality Assurance Plan**

Quality assurance is maintained through continuous testing, validation, and performance evaluation of the fingerprint personality prediction system. The system is tested at different stages to ensure proper functionality, reliability, and prediction accuracy. Unit testing, integration testing, and system testing are performed for preprocessing, feature extraction, classification, and database modules. Machine Learning models are validated

using training and testing datasets to improve prediction performance and reduce classification errors. The software is designed using modular architecture to simplify maintenance and future enhancements. Test cases, debugging reports, and performance evaluations are maintained regularly to ensure that the system satisfies both functional and non-functional requirements.

### **Conclusion and Future Work**

The “Palm-Print: AI Based Fingerprint Learning and Personality Profiling” system successfully demonstrates how fingerprint biometrics, image processing, and Machine Learning techniques can be integrated to develop an intelligent personality prediction platform. The proposed system performs fingerprint preprocessing, feature extraction, classification, and personality prediction through automated biometric analysis. By analyzing fingerprint characteristics such as loops, whorls, arches, ridge density, and minutiae points, the system provides a scientific and data-driven approach for personality assessment. The integration of Machine Learning and Deep Learning algorithms such as Support Vector Machine (SVM), Decision Tree, and Convolutional Neural Networks (CNN) improves fingerprint classification accuracy and prediction efficiency. The preprocessing and feature extraction techniques enhance fingerprint quality and ensure reliable biometric analysis during prediction operations. Unlike traditional questionnaire-based personality assessment methods, the proposed system provides a fast, automated, and non-invasive solution with reduced human intervention and subjective interpretation. The developed system can support various applications including educational guidance, career counseling, recruitment analysis, and personal development. The modular architecture of the system allows easy maintenance, future modifications, and integration of advanced AI technologies. Overall, this project demonstrates the practical implementation of AI-driven fingerprint personality prediction and highlights the effectiveness of combining biometric analysis with intelligent Machine Learning techniques for behavioral assessment.

### **Future Work**

The future scope of the “Talent-Print: AI Based Fingerprint Learning and Personality Profiling” system is broad, as advancements in Artificial Intelligence, biometric technologies, and Deep Learning can further improve prediction accuracy and system capabilities. The current system provides a strong foundation for future research and intelligent behavioral analysis applications.

### **1. Integration of Advanced Deep Learning Models**

In future versions, advanced Deep Learning architectures such as hybrid CNN models and transfer learning techniques can be implemented to improve fingerprint classification and personality prediction accuracy. Larger datasets can also be used for better model training and performance optimization.

### **2. Cloud-Based Personality Analysis**

System The system can be integrated with cloud platforms for online fingerprint processing, result management, and centralized storage of biometric data. Cloud integration can support remote access, online prediction systems, and large-scale personality analysis applications.

### **3. Real-Time Fingerprint Analysis**

Future improvements may include real-time fingerprint scanning and instant personality prediction using advanced biometric devices and optimized Machine Learning models. This enhancement can improve usability and processing speed.

### **4. Multi-Biometric Personality Prediction**

The system can be extended by integrating additional biometric features such as face recognition, handwriting analysis, voice analysis, or eye movement tracking for more comprehensive personality assessment and behavioral analysis.

### **5. Mobile Application Development**

A mobile application can be developed for easier fingerprint analysis and result visualization. The application may provide personality reports, behavioral insights, learning style analysis, and career guidance recommendations through a user-friendly interface.

### **6. Educational and Recruitment Applications**

The proposed system can be expanded for use in educational institutions and recruitment organizations to support student counseling, talent identification, team management, and candidate assessment processes.

### **7. Research and Psychological Analysis**

Future research can focus on improving dermatoglyphic analysis and exploring stronger relationships between fingerprint patterns, intelligence, behavior, and psychological characteristics using advanced AI-based technologies.

## References

1. Darade, S., Jadhav, A., Patil, H., Gaikwad, V., Raikar, S., & Patil, D. (2024). Multiple intelligence evaluation using dermatoglyphics for identifying learner types and personality in children. *IEEE*.
2. IEEE. (2023). Application of deep neural networks in dermatoglyphics for academic achievement. *IEEE Transactions*.
3. Singh, M., & Majumdar, O. (2015). Dermatoglyphics: Blueprints of human cognition on fingerprints. *IEEE Transactions on Pattern Analysis and Machine Intelligence*.
4. Alam, N., Ahsan, M., Haider, J., & Kowalskie, M. (2021). An intelligent system for automatic fingerprint identification using feature fusion by Gabor filter and deep learning. *Science Direct*.
5. Najafi, M. (2014). Relationship between fingerprint patterns and IQ in teenagers. *Journal of Psychology*.
6. Valdez, M. L. A., & Pathak, T. (2014). Assessment of dermatoglyphics multiple intelligence test (DMIT) reports: Implication to career guidance program enhancement of academic institutions. *Asia Pacific Journal of Multidisciplinary Research*.
7. Liu, Y., Zhang, H., & Li, C. (1999). Feasibility of identifying children's intelligence through dermatoglyphic analysis. *China Education Research*.
8. Darji, K., Darji, S., Nisar, S., & Joshi, A. (2021). Automatic dermatoglyphics multiple intelligence test based on fingerprint analysis using convolution neural network. Springer.
9. Aboalhsan, A., & Alatawi, M. N. (2022). Deep learning technique for fingerprint recognition. In *2022 2nd International Conference on Computing and Information Technology (ICCIT)*.
10. He, Y., Tian, J., Luo, X., & Zhang, T. (2003). Image enhancement and minutiae matching in fingerprint verification. *Pattern Recognition Letters*, 24(9), 1349–1360.
11. Hong, J. H., Min, J. K., Cho, U. K., & Cho, S. B. (2008). Fingerprint classification using one-vs-all support vector machines dynamically ordered with naive Bayes classifiers. *Pattern Recognition*, 41(2), 662–671.
12. Jain, A. K., Flynn, P., & Ross, A. A. (Eds.). (2007). *Handbook of biometrics*. Springer Science & Business Media.

13. Jain, A. K., Prabhakar, S., & Hong, L. (1999). A multichannel approach to fingerprint classification. *IEEE Transactions on Pattern Analysis and Machine Intelligence*, 21(4), 348–359.
14. Li, S., Tang, H., Wei, H., & Zhuang, T. (2006). Image enhancement method for fingerprint recognition system. In *Proceedings of the 27th Annual Conference of IEEE Engineering in Medicine and Biology*.
15. Maltoni, D., Maio, D., Jain, A. K., & Prabhakar, S. (2003). *Handbook of fingerprint recognition*. Springer-Verlag.
16. Maltoni, D., Maio, D., Jain, A. K., & Prabhakar, S. (2009). *Handbook of fingerprint recognition* (2nd ed.). Springer.
17. Ray, M., Meenen, P., & Adhami, R. (2005). A novel approach to fingerprint pore extraction. In *Proceedings of the Thirty-Seventh Southeastern Symposium on System Theory (SSST'05)* (pp. 282–286). IEEE.

# BIOMETRIC SYSTEMS: Technology, Design and Performance Evaluation

(ISBN: 978-81-688266-0-1)

## About Editors



Prof. Hiranman Sheshrao Jadhav is a distinguished academician and researcher with a Ph.D. in Computer Science and Engineering from Kalinga University, Raipur, Chhattisgarh. He possesses over 11 years of experience spanning teaching, research, and industry. Currently, he serves as an Assistant Professor in the Department of Information Technology at D. Y. Patil College of Engineering, Akurdi, Pune. His research interests include Data Analytics, Artificial Intelligence, Machine Learning, and Deep Learning. Prof. Jadhav has authored several research papers published in reputed international journals and conference proceedings. He actively participates in academic workshops, Faculty Development Programs (FDPs), Short-Term Training Programs (STTPs), and guest lectures. His dedication to academic excellence and professional development continues to inspire students, researchers, and fellow educators across institutions.



Dr. Mayuri Rathi is a distinguished academician and researcher with a Ph.D. in Electronics and Telecommunication Engineering. She has approximately 12 years of experience in teaching, research, and industry. Currently, she serves as an Assistant Professor in the Department of Information Technology at D. Y. Patil College of Engineering, Akurdi, Pune. Her research interests include Data Analytics, Data Science, Artificial Intelligence, Machine Learning, and Deep Learning. Dr. Rathi has authored numerous research papers in reputed international journals and conference proceedings. She actively contributes to academic workshops, Faculty Development Programs (FDPs), Short-Term Training Programs (STTPs), and guest lectures. Her dedication to academic excellence, innovation, and lifelong learning continues to advance technical education and research while inspiring students, researchers, and fellow academicians across diverse disciplines.



Prof. Renuka S. Patil is currently serving as an Assistant Professor in the Department of Information Technology at D. Y. Patil College of Engineering, Akurdi, Pune. She has approximately 8.5 years of teaching experience in engineering education and has made significant contributions to academic and professional development. Throughout her career, she has actively participated in various national and international conferences, enhancing her knowledge and engagement with emerging trends in technology and education. Prof. Patil has also contributed to the research community through the publication of research papers in reputed journals and conference proceedings. Her interests include teaching, research, and the advancement of Information Technology education. She remains committed to fostering academic excellence, innovation, and the holistic development of future engineering professionals.



Prof. Abhilasha Kore is currently serving as an Assistant Professor in the Department of Information Technology at D. Y. Patil College of Engineering, Akurdi, Pune. She has approximately 10 years of teaching experience in engineering education and has consistently contributed to academic and professional growth. Throughout her career, she has actively participated in numerous national and international conferences, broadening her expertise and engagement with contemporary developments in the field. Prof. Kore has also contributed to the research community through the publication of research papers in reputed journals and conference proceedings. Her areas of interest include teaching, research, and the advancement of Information Technology education. She is dedicated to promoting academic excellence, fostering innovation, and nurturing the technical and professional development of aspiring engineering students.

