



## IoT-ENABLED HEALTHCARE

### MONITORING SYSTEM FOR REMOTE PATIENTS

Nisha Yadav\*, Abhishek Kumar, Anand P Nair and Kushavah Raju Arjunsingh

Department of Information Technology,

Pillai College of Arts, Commerce & Science (Empowered Autonomous), Navi Mumbai, Maharashtra, India 410206

\*Corresponding author E-mail: [nishayadav@mes.ac.in](mailto:nishayadav@mes.ac.in)

Received: 31 January 2026

Revised: 28 February 2026

Accepted: 20 March 2026

Published: 31 March 2026

DOI: <https://doi.org/10.5281/zenodo.19570810>

#### Abstract:

The integration of Internet of Things (IoT) technology into healthcare has enabled the development of smart systems capable of continuous and remote patient monitoring. This paper presents an IoT-based healthcare monitoring system designed to track patient health parameters in real time. The proposed system utilizes multiple sensors, including heart rate, body temperature, and galvanic skin response sensors, to collect physiological data. The collected data is processed using microcontroller-based platforms such as Arduino Uno and Raspberry Pi and is transmitted to a cloud-based storage system. The cloud platform ensures real-time data availability and allows healthcare professionals to access patient information remotely. A mobile application interface is used to visualize the data in an understandable format. The system reduces the need for frequent hospital visits, minimizes healthcare costs, and supports timely medical decision-making. The study also highlights challenges such as data security and system reliability. Overall, IoT-based healthcare systems provide an efficient and scalable solution for remote patient care.

**Keywords:** Internet of Things (IoT), Remote Patient Monitoring (RPM), Smart Healthcare System, Wearable Sensors, Cloud Computing.

#### 1. Introduction

The healthcare sector has undergone significant transformation with the adoption of advanced digital technologies. One of the most influential innovations is the Internet of Things (IoT), which enables interconnected devices to collect and exchange data over the internet. IoT has become an essential component in modern healthcare systems due to its ability to provide continuous monitoring and real-time data access [1].

IoT-based healthcare systems consist of sensors, communication technologies, and cloud platforms that work together to monitor patient health conditions remotely. These systems enable healthcare providers to access patient data without requiring physical presence, thereby improving efficiency and accessibility [2].

Remote Patient Monitoring (RPM) is one of the key applications of IoT in healthcare. It allows patients to receive medical supervision from their homes, reducing hospital congestion and associated costs. IoT devices continuously collect vital health parameters such as heart rate, body temperature, and electrocardiogram (ECG) signals, enabling early detection of potential health issues [3].

The objective of this study is to design and analyze an IoT-enabled healthcare monitoring system that supports real-time patient tracking. The system aims to provide alerts in case of abnormal conditions and improve the overall quality of healthcare services.

## 2. Literature review

The application of IoT in healthcare has been widely studied, with researchers focusing on system architecture, sensor technologies, and data security.

Gubbi *et al.* [1] discussed the fundamental concepts of IoT and proposed a general architecture consisting of sensing, network, and application layers. This architecture forms the basis for many healthcare monitoring systems.

Kumar and Lee [2] examined security challenges in healthcare sensor networks, highlighting issues such as data privacy, authentication, and secure communication. Their study emphasizes the importance of implementing strong security mechanisms in IoT-based healthcare systems.

Patel *et al.* [3] reviewed wearable sensor technologies used in healthcare and rehabilitation. Their research demonstrates that wearable devices can effectively monitor physiological parameters and support long-term patient care.

Recent studies have also explored cloud-based healthcare systems, where patient data is stored and analyzed in real time. These systems improve accessibility and allow healthcare professionals to make informed decisions quickly [4].

Additionally, research on remote patient monitoring systems indicates that continuous health tracking can significantly reduce hospital readmissions and improve patient outcomes [5].

## 3. System architecture

The proposed IoT-enabled healthcare monitoring system is designed using a layered architecture to ensure efficient data collection, processing, transmission, and visualization. The system is divided into four major layers, each performing a specific function in the overall workflow.

**Sensing layer:** The sensing layer is the foundation of the system, responsible for collecting physiological data from the patient. It consists of biomedical sensors such as heart rate sensors, body temperature sensors, and galvanic skin response (GSR) sensors. These sensors continuously monitor vital health parameters and convert physical signals into digital data. The accuracy and reliability of this layer are critical, as it directly affects the quality of the collected data.

**Processing layer:** The processing layer handles the initial processing and management of the collected sensor data. In this system, microcontroller and microprocessor platforms such as Arduino Uno and Raspberry Pi are used. The Arduino Uno collects raw data from sensors and performs basic signal conditioning and filtering. The Raspberry Pi acts as a gateway device that processes the data further, organizes it, and prepares it for transmission to the cloud. This layer ensures that only meaningful and structured data is forwarded.

**Communication layer:** The communication layer is responsible for transmitting the processed data from the local system to remote servers. Technologies such as Wi-Fi, Bluetooth, or other internet protocols are used for data transmission. In this system, Wi-Fi connectivity enables real-time communication between the Raspberry Pi and cloud platforms. This layer plays a crucial role in ensuring reliable, fast, and secure data transfer.

**Application layer:** The application layer provides an interface for end users, including doctors, caregivers, and patients. A mobile or web-based application is developed to display the collected data in graphical and user-friendly formats. This layer enables healthcare professionals to monitor patient conditions remotely, analyze trends, and make informed decisions. It may also include alert systems that notify users in case of abnormal health readings.

#### 4. Working of the system

The operation of the system follows a structured process:

- i. Biomedical sensors continuously monitor patient parameters such as heart rate and temperature.
- ii. Sensors generate analog signals which are converted into digital form using Arduino Uno.
- iii. Arduino performs preprocessing such as filtering and noise reduction.
- iv. The processed data is sent to Raspberry Pi for further handling.
- v. Raspberry Pi transmits the data to a cloud server via internet.
- vi. The cloud platform stores and updates data in real time.
- vii. The mobile application retrieves and displays the data graphically.
- viii. Alerts are generated automatically when abnormal values are detected.

#### 5. Purpose of the study

The primary purpose of this study is to analyze the effectiveness of IoT-based healthcare monitoring systems in improving remote patient care and healthcare service delivery.

The main objectives are:

- To understand the architecture and functioning of IoT-based healthcare systems
- To analyze the benefits of remote patient monitoring
- To identify challenges related to data security and system reliability
- To explore future opportunities in IoT-enabled healthcare

#### 6. Research questions

- How does an IoT-based healthcare monitoring system function?
- What are the advantages of IoT in remote patient care?
- What challenges are associated with IoT healthcare systems?
- How can data security and privacy be ensured?

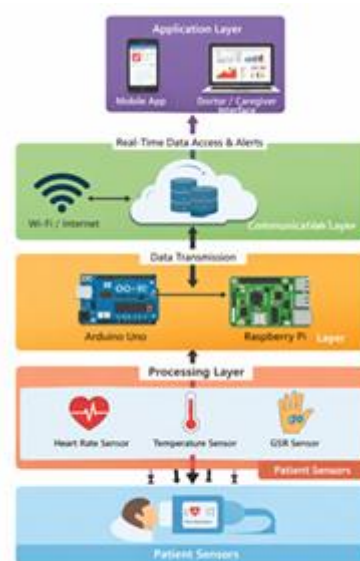


Fig. 1: IoT-Enabled Healthcare Monitoring System Architecture

## 7. Methodology

This research is based on a qualitative approach using secondary data sources. Information was collected from academic journals, conference papers, and research publications related to IoT and healthcare systems. A descriptive and exploratory research design was used to analyze existing studies and identify key trends in IoT-based healthcare monitoring.

## 8. Data collection

The data was collected from reliable sources such as:

- Peer-reviewed journals
- Conference proceedings
- Academic books
- Research reports

These sources provided comprehensive insights into IoT healthcare technologies and their applications.

## 9. Data analysis and interpretation

The collected data was analyzed using thematic analysis. The key themes identified include:

Real-time monitoring

- Remote healthcare services
- IoT system architecture
- Data management
- Security and privacy

The analysis indicates that IoT-based systems enable continuous monitoring of patient health conditions, allowing healthcare providers to respond quickly to emergencies. These systems are particularly beneficial for elderly patients and individuals with chronic diseases.

## Conclusion

IoT-enabled healthcare monitoring systems offer a modern solution for improving patient care through continuous and remote monitoring. These systems enhance accessibility, reduce healthcare costs, and support timely medical intervention. However, challenges such as data security, privacy, and system reliability must be addressed to ensure effective implementation. With advancements in technology, IoT-based healthcare systems are expected to play a crucial role in future medical services.

## References

1. Gubbi, J., Buyya, R., Marusic, S., & Palaniswami, M. (2013). Internet of things (IoT): Vision, architectural elements and future directions. *Future Generation Computer Systems*, 29(7), 1645–1660.
2. Kumar, P., & Lee, H. J. (2012). Security issues in healthcare applications using wireless medical sensor networks: A survey. *Sensors*, 12(1), 55–91.
3. Patel, S., Park, H., Bonato, P., Chan, L., & Rodgers, M. (2012). A review of wearable sensors and systems with application in rehabilitation. *Journal of NeuroEngineering and Rehabilitation*, 9(1).
4. Chen, M., Ma, Y., Song, J., Lai, C., & Hu, B. (2016). Smart clothing: Connecting human with clouds and big data for sustainable health monitoring. *Mobile Networks and Applications*, 21(5), 825–845.
5. Alaa, A., Zaidan, M., Zaidan, B., Talal, M., & Kiah, M. (2017). A review of smart home applications based on Internet of Things. *Journal of Network and Computer Applications*, 97, 48–65.

6. Islam, S. M. R., Kwak, D., Kabir, M. H., Hossain, M., & Kwak, K. S. (2015). The Internet of things for health care: A comprehensive survey. *IEEE Access*, 3, 678–708.
7. Darwish, A., & Hassanien, A. E. (2011). Wearable and implantable wireless sensor network solutions for healthcare monitoring. *Sensors*, 11(6), 5561–5595.
8. Catarinucci, L., et al. (2015). An IoT-aware architecture for smart healthcare systems. *IEEE Internet of Things Journal*, 2(6), 515–526.
9. Hagi, M., Thurow, K., & Stoll, R. (2017). Wearable devices in medical Internet of things: Scientific research and commercially available devices. *Healthcare Informatics Research*, 23(1), 4–15.
10. Alemdar, H., & Ersoy, C. (2010). Wireless sensor networks for healthcare: A survey. *Computer Networks*, 54(15), 2688–2710.
11. Istepanian, R. S. H., Hu, S., Philip, N. Y., & Sungoor, A. (2011). The potential of Internet of m-health things (m-IoT) for non-invasive glucose level sensing. *IEEE Sensors Journal*, 11(10), 2247–2254.